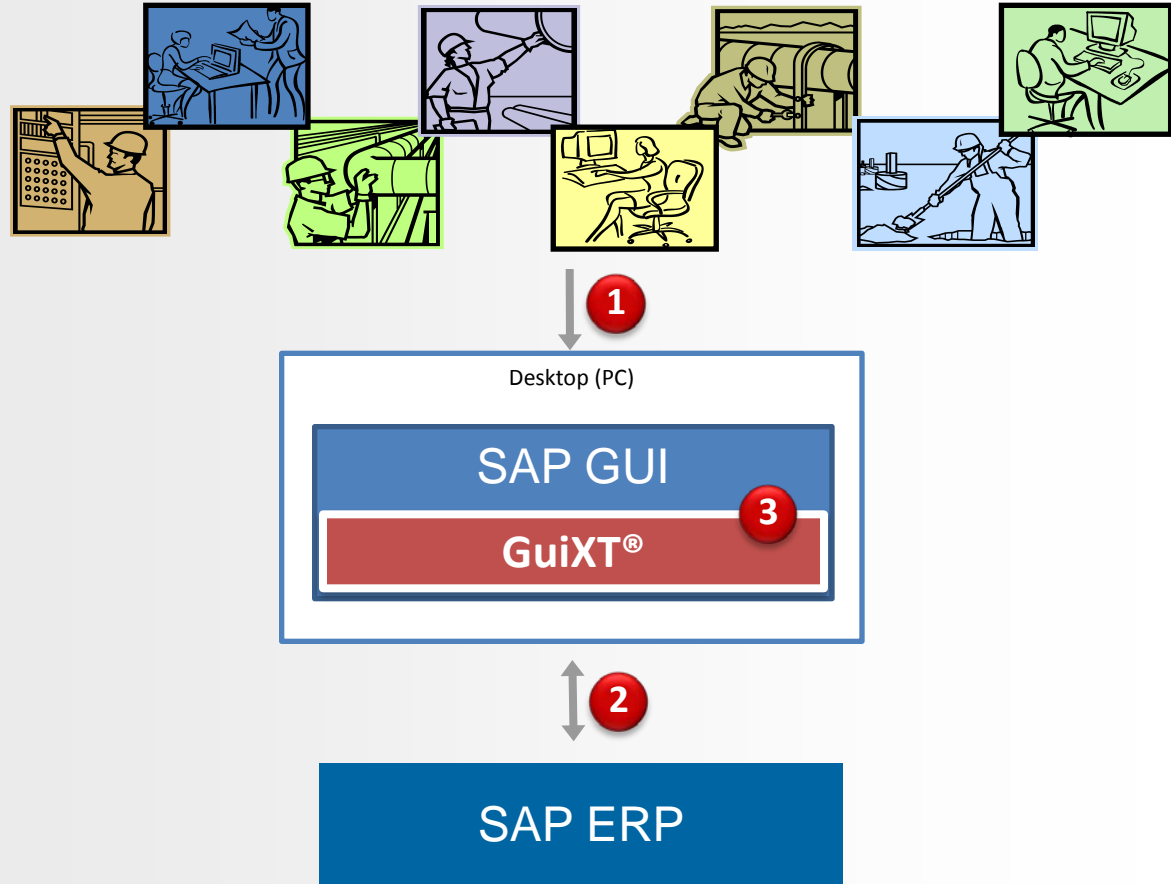


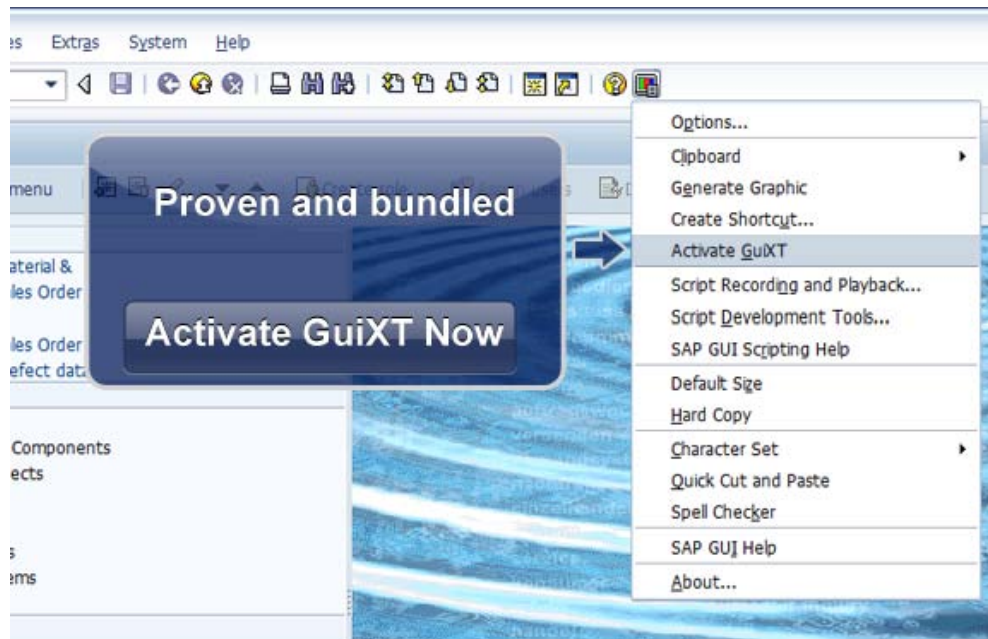
How Does GuiXT Work?

- 1) User makes a request via SAPGUI (e.g. VA01)
- 2) SAP responds with VA01 screen
- 3) GuiXT screen modifications are applied and SAPGUI draws new screen for VA01



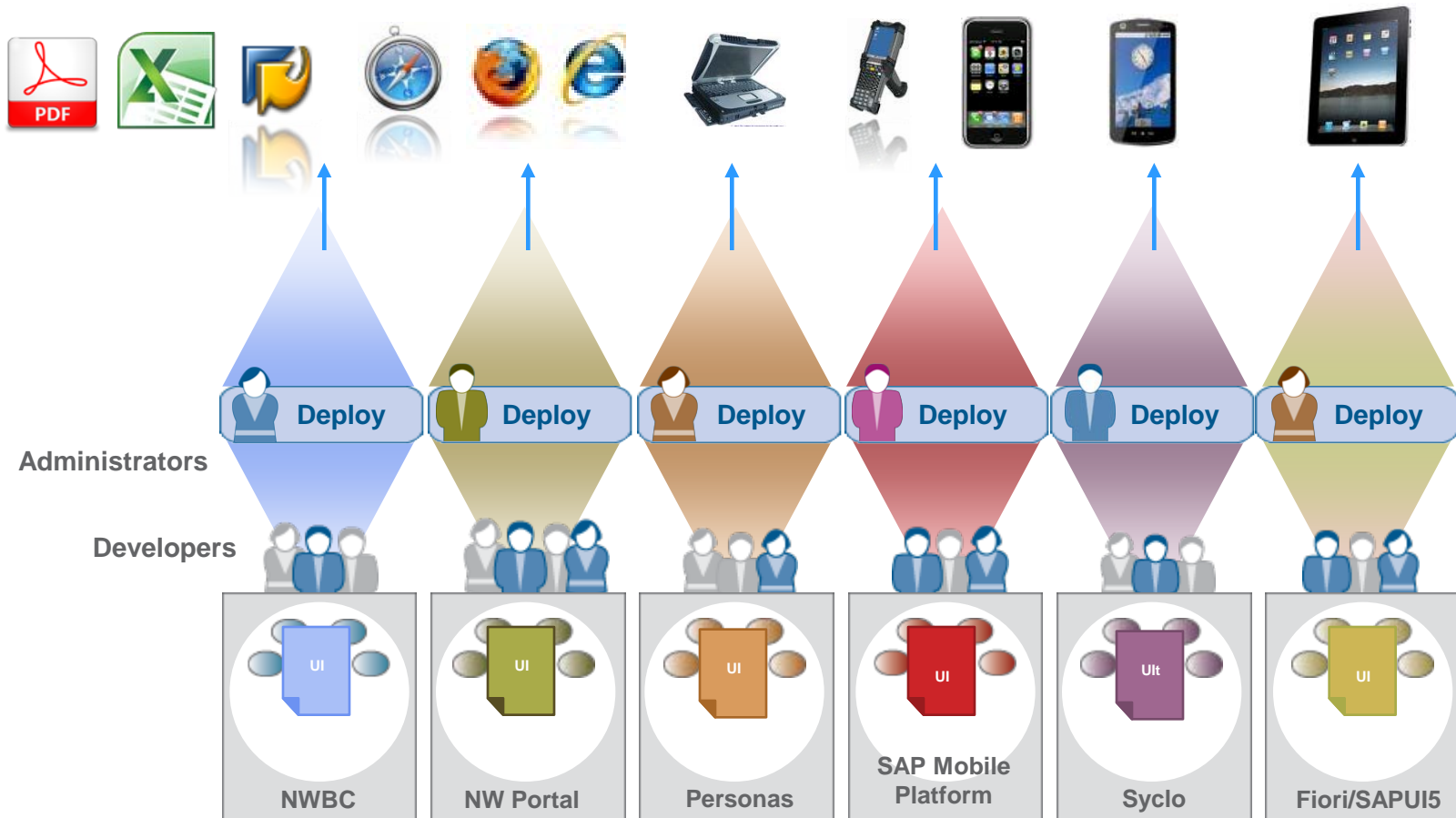
GuiXT Developer Toolkit used to generate GuiXT screens

What is included with SAP GUI?

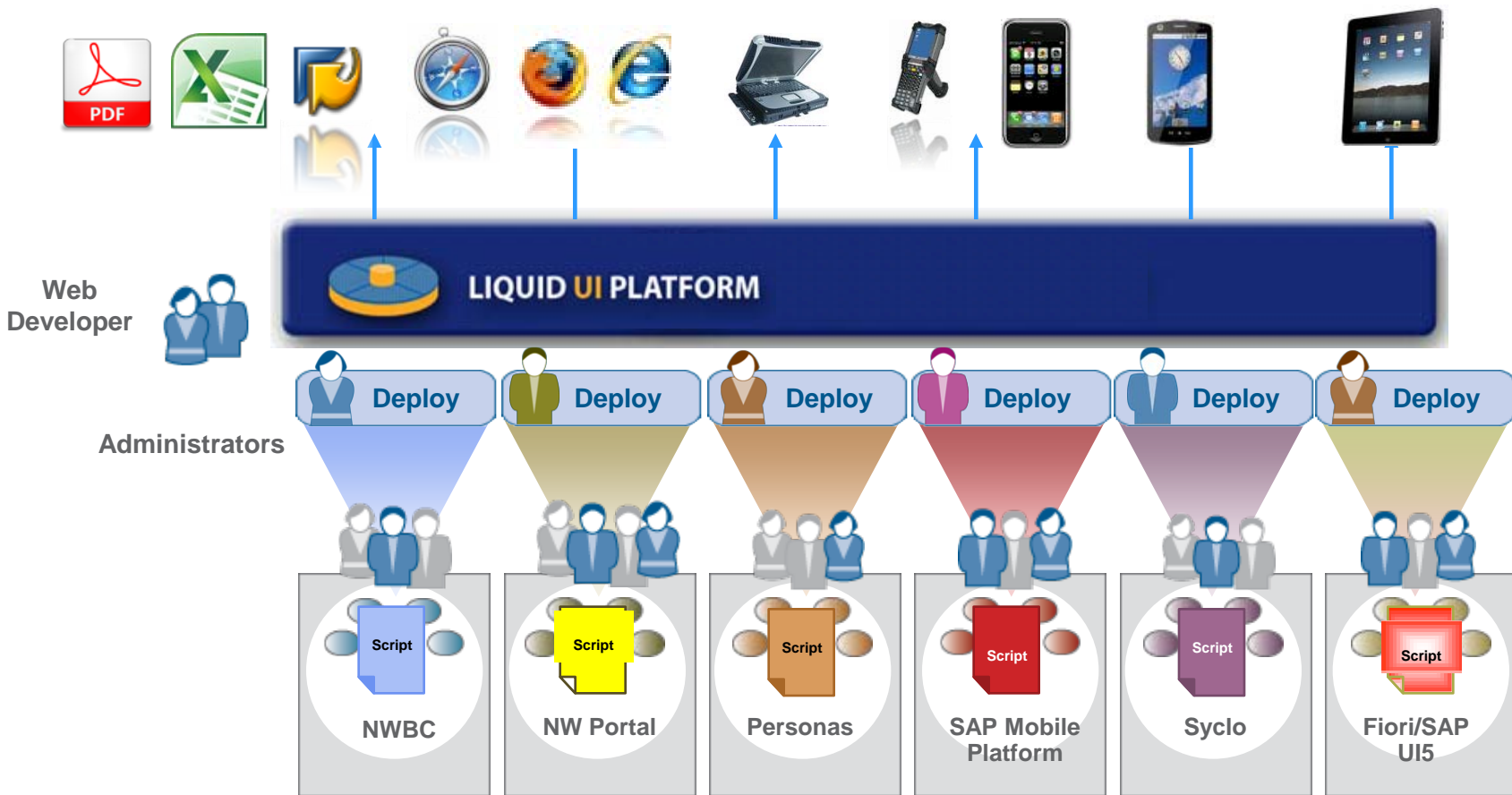


- Single screen modifications only
- No screen aggregation

Improving the User Experience Before Liquid UI

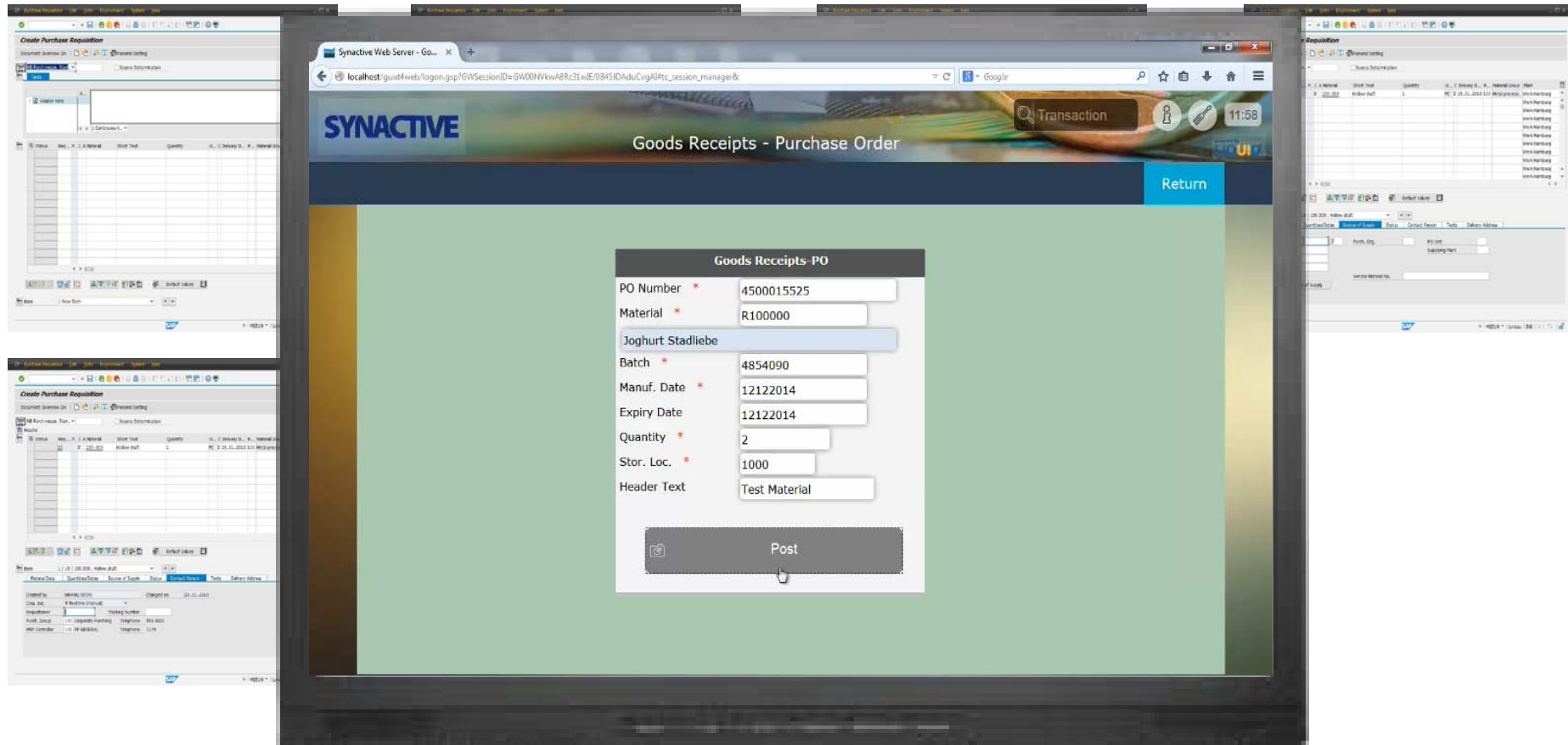


Improving the User Experience After Liquid UI

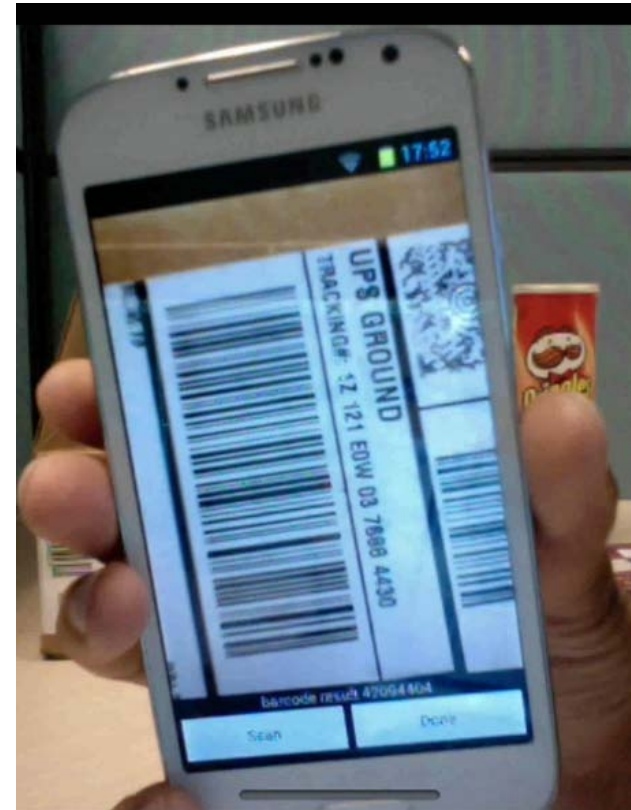


Liquid UI Screen Aggregation

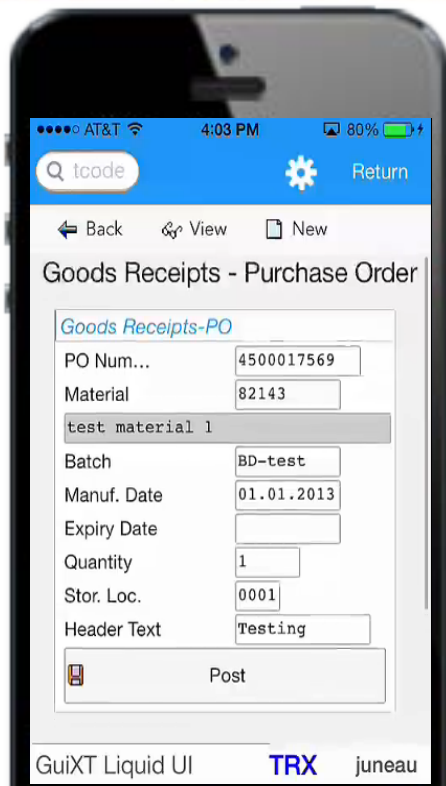
Good Receipt for Purchase Order



Same Application on Android with Camera Integration for Barcode Scanning



Same Application on iPhone / iPad And Windows Scanguns



ONE development effort, multiple touchpoints

For full screen recording go to:

http://www.guixt.com/rapidapps/goods_receipt.php



Plant Maintenance

Create Work Order was reduced from 8 minutes to 4 minutes. Improved workflow and reduced error rate by 50%. Reduced training from 2 hours to 30 minutes. Total Saving of \$90,000 per year.



Materials Management

This helped them in reducing the training time by 75%, standardizing the process, making the users 66% more efficient and also helped in minimizing the errors.



Procure To Pay

Ten to twelve actions reduced to a maximum of three actions; 75% time savings with improved accuracy.



Sales Order / Quotes

Create sales order reduce to 3 screens from 22 screens, which previously took 8 minutes to process vs. 3 minutes. Training time reduced by 65%.



Fleet Maintenance

Barcode scanners attached to Desktop for vehicle parts, streamlined the process increasing efficiency and improved truck deliveries by 60%. In addition, the warranty process saved \$1million per year.



Order To Cash

Improved overall customer service and satisfaction by more than 60%.



Warehouse Management

Physical inventory count process was reduce by 50%, errors reduced by 75%, employee productivity increased by 40%, easy to train employees and intuitive interface.



Service Management

Change and Display transactions have the same benefits. Boost maintenance staff productivity by 100%, faster maintenance and fault repair system improves overall productivity. Over \$1million plus in annual savings.



Challenges For Company

- Compliance to Regulatory boards
- Increase production costs
- Unplanned downtime
- Equipment failures
- Laborious scheduling and monitoring of maintenance resources
- Uncontrolled inventory



Plant Maintenance Customers

Honeywell



Pacific Gas and Electric Company®

 **MedImmune**


Marathon Oil Corporation



MAERSK



REXAM

AstraZeneca 

 **Westinghouse**

Rinker
MATERIALS™

 **IDT**
Integrated Device Technology


TENNECO

Plant Maintenance Planning and Scheduling Console

System Help

Supervisor

Planner Scheduler Reset Search

SEARCH

Func.Locations

- IH01
- IH03

Orders & Oper.

- IW38
- IW37N
- IW41

Task Lists

- IA08
- IA10

SCHEDULE

- CM25
- CM01
- IR02

REPORTS

- Reports

MY ORDERS

	PRIORITY					Total
	P1	P2	P3	P4	P5	
All Orders	2	18	9	3	0	32
AWAP	0	3	1	1	0	5
RSCH	0	2	0	0	0	2
RDSP	0	1	1	0	0	2
DSPT	0	0	1	0	0	1
Overdue	0	1	0	0	0	1
Pastdue	2	18	3	1	0	24
PCNF	0	1	1	0	0	2
CNF	0	2	2	0	0	4

Func. Loc. Order type

Main Wk Ctr Oper. Wk Ctr

Start. Date Finish. Date

Orders

Order No	Description	Pri...	Func. Loc	Status	Type	Sys.	St.Date.	Fn.Date	Sel.
100003434	Test M1	3	EFGO-CPFB...	PLIP	PM01	CRTD...	04/05/2012	04/05/2012	
100003435	MR - GuiXT #3 from ...	2	EFGO-CPFB...	RSCH	PM01	REL ...	03/28/2012	03/28/2012	
100003436	UD - Sample Mainten...	4	EFPL-FORO...	PLIP	PM01	CRTD...	04/26/2012	04/26/2012	
100003437	UD - Sample Mainten...	3	EFKE-CPF7...	AWAP	PM01	CRTD...	04/10/2012	04/10/2012	
100003438	MR GuiXT #2	2	EFGO-CPFB...	PLIP	PM01	CRTD...	03/28/2012	03/28/2012	
100003441	MR GuiXT #5	2	EFGO-CPFB...	AWAP	PM01	CRTD...	03/28/2012	03/28/2012	
100003442	MR GuiXT #3	2	EFGO-CPFB...	PLIP	PM01	CRTD...	03/28/2012	03/28/2012	
100003521	Final test for ENH...	4	EFGO-EV10...	RJCT	PM01	CRTD...	06/11/2012	08/23/2012	
200010223	Pumpjack failure te...	2	EFKE-74R0...	INIT	PM02	REL ...	03/27/2012	03/29/2012	
200010224	Motor stopped runni...	2	EFKE-74R0...	PLIP	PM02	CRTD...	03/27/2012	03/29/2012	
200010225	Well-head separator...	3	EFKE-0BKO...	PLIP	PM02	CRTD...	04/09/2012	05/25/2012	
200010226	Pump jack noise	3	EFKE-74R0...	PLIP	PM02	CRTD...	04/09/2012	05/25/2012	
200010227	Test 1234	3	EFKE-CPF7...	PLIP	PM02	CRTD...	04/05/2012	05/21/2012	
200010228	Pump jack leaking t...	2	EFKE-74R0...	PLIP	PM02	REL ...	03/28/2012	03/30/2012	
200010229	Pump jack leaking	2	EFKE-74R0...	PLIP	PM02	CRTD...	03/28/2012	03/30/2012	
200010230	MalfR: GuiXT #1	2	EFGO-BHT0...	PLIP	PM02	CRTD...	03/28/2012	03/30/2012	
200010232	M2 GuiXT Test #4	1	EFGO-CPFB...	PLIP	PM02	CRTD...	03/27/2012	03/28/2012	
200010233	M2 GuiXT Test #2	1	EFGO-CPFB...	PLIP	PM02	CRTD...	03/27/2012	03/28/2012	
200010234	Pump jack leaking	2	EFKE-74R0...	PLIP	PM02	CRTD...	03/29/2012	03/31/2012	
200010235	Pump jack leaking p...	3	EFKE-74R0...	PLIP	PM02	CRTD...	04/11/2012	05/27/2012	
200010236	Test order	3	EFKE-LGHO...	DSPT	PM02	REL ...	04/11/2012	06/21/2012	
200010237	Pump jack leaking d...	2	EFKE-74R0...	PLIP	PM02	CRTD...	03/29/2012	03/31/2012	

SAP

Synactive GuiXT

ZMPMI050 moh8007e INS

Start 2 Internet Explorer Marathon My Computer P997... 3 SAP Logon for... Synactive GuiXT 5 Notepad 5:47 PM

Statistics

With approximately 8,000 work orders in various stages, an average of 5 mins per work order was reduced to 30 secs, increasing productivity by 90%.



Liquid UI- IOS

The screenshot displays the 'Planner Console' mobile application interface. At the top, the status bar shows 'Carrier', signal strength, '4:53 PM', and '100%' battery. The app header includes a 'Back' button, a search icon, the title 'Planner Console', a menu icon, and a 'Return' button. Below the header are navigation tabs for 'Main', 'Scheduler', 'Supervisor', and 'Reset Search'.

The main content area is divided into three sections:

- SEARCH:** A vertical list of filters including 'Func. Locations' (IH01, IH06), 'Orders & Oper.' (IW38), 'Operations' (IW37N, IW13), 'Disp. Task List', 'Task List' (IA07), 'General' (IA09), 'Multilevel' (IA10), 'Disp. Revisions' (OIOB), 'REPORTS' (MD04, MB51), and 'Permits'.
- MY ORDERS:** A summary table and filter section. The table shows counts for priority levels P1/P2, P3, P4/P5, and Total. Below the table are input fields for 'Func. Loc.', 'Rev. Code', 'Start. Date', 'Main. Plant', 'Finish. Date', and 'Planner Group'. Three buttons for 'Order Type', 'Main Wrk Ctr', and 'Oper Wrk Ctr' are also present.
- Orders:** A table listing individual orders with columns for 'Order No', 'Description', and 'Priority'.

An 'Update Search' button is located at the bottom center of the main content area.

	P1/P2	P3	P4/P5	Total
All Orders	5	4	3	12
INIT	1	1	0	2
PLIP	0	2	1	3
R...	4	2	1	7
PL.Overdue	2	2	2	6

Order No	Description	Priority
500400	Hard disk pr...	2
501300		1
811044	Pumpwerk K...	2
811084	Repair Pump	3
812209	Testauftrag ...	2
812400		1
812462	Defragment ...	2
812520	Clarification ...	2
812522	Fix the truck	2
812563	Colors are f...	2
812564	Relocation o...	4
813171	Counter bas...	3
813340	Testmeldun...	3
813541	Overhaul th...	3

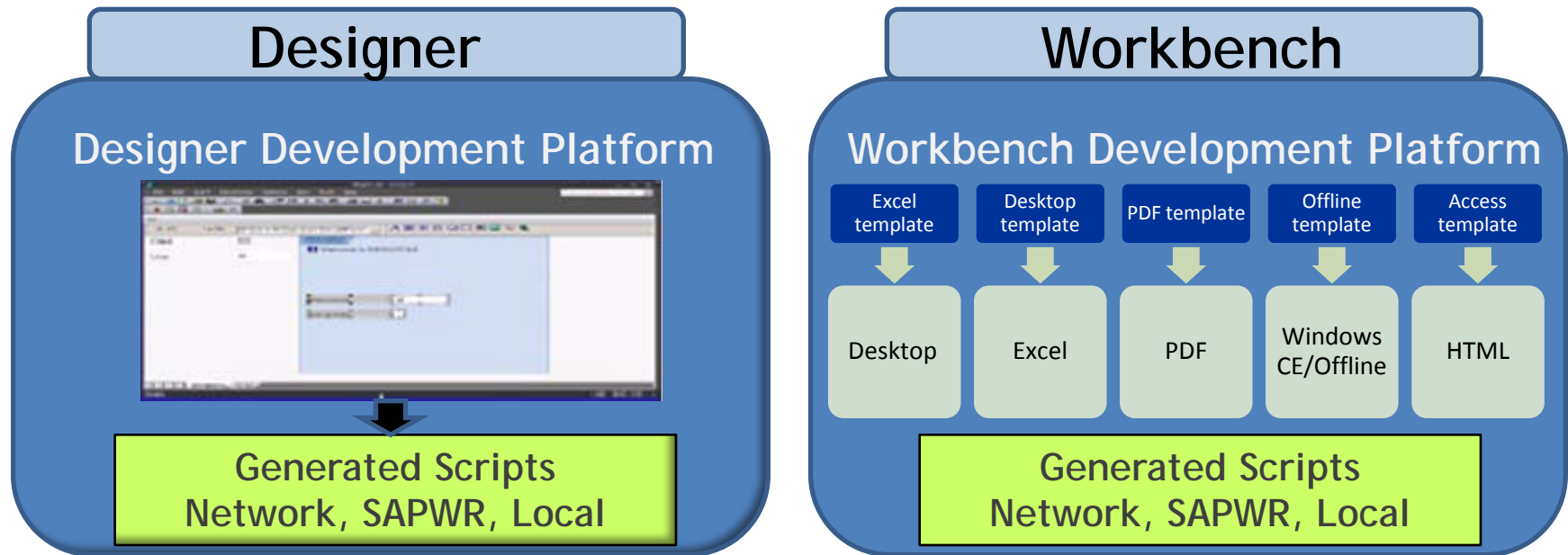
Carrier 4:53 PM 100%
Back Planner Console Return
Main Scheduler Supervisor Reset Search
SEARCH
Func. Locations
→IH01
→IH06
Orders & Oper.
Orders
→IW38
Operations
→IW37N
→IW13
Disp. Task List
Task List
→IA07
General
→IA09
Multilevel
→IA10
Disp. Revisions
→OIOB
REPORTS
Materials
→MD04
→MB51
Permits
MY ORDERS
PRIORI...
P1/P2 P3 P4/P5 Total
All Orders 5 4 3 12
INIT 1 1 0 2
PLIP 0 2 1 3
R... 4 2 1 7
PL.Overdue 2 2 2 6
Func. Loc.
Rev. Code.
Start. Date.
Main. Plant
Finish. Date
Planner Group
Order Type Main Wrk Ctr Oper Wrk Ctr
Update Search
Orders
Order No Description Priority
500400 Hard disk pr... 2
501300 1
811044 Pumpwerk K... 2
811084 Repair Pump 3
812209 Testauftrag ... 2
812400 1
812462 Defragment ... 2
812520 Clarification ... 2
812522 Fix the truck 2
812563 Colors are f... 2
812564 Relocation o... 4
813171 Counter bas... 3
813340 Testmeldun... 3
813541 Overhaul th... 3
GuiXT Liquid UI TRX juneau

Benefits with Liquid UI – SAP @ Your Fingertips

- Native speed of SAP GUI (browser/web server is optional)
- Fully secure, not at mercy of browser
- No kernel upgrade
- No Odata, SMP, Gateway, etc
- Reduced training time
- Increase data integrity, reduce errors
- Increase customer satisfaction
- Increase efficiency
- 16 years of UX domain expertise
- Unified UI strategy for Desktop, Mobile devices and Web

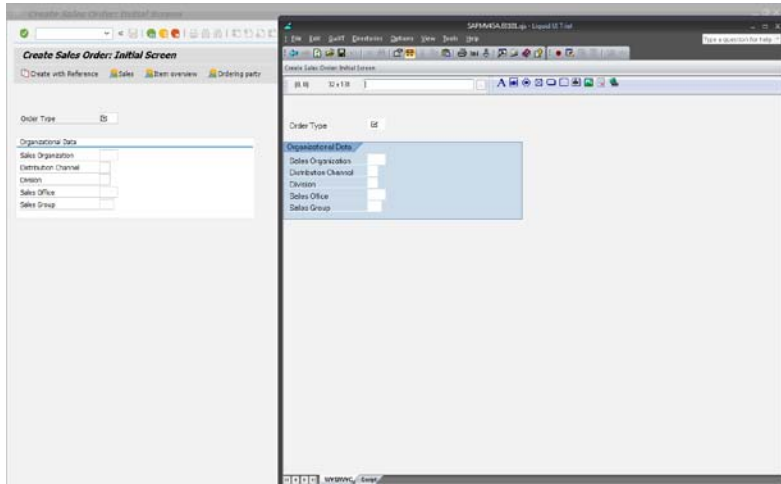


The Synactive Developer Suite

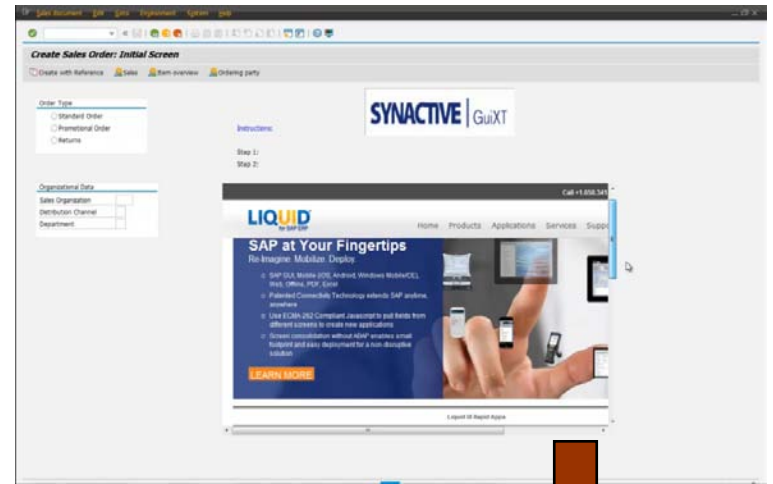
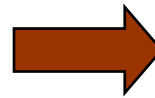


One Suite - Two Components

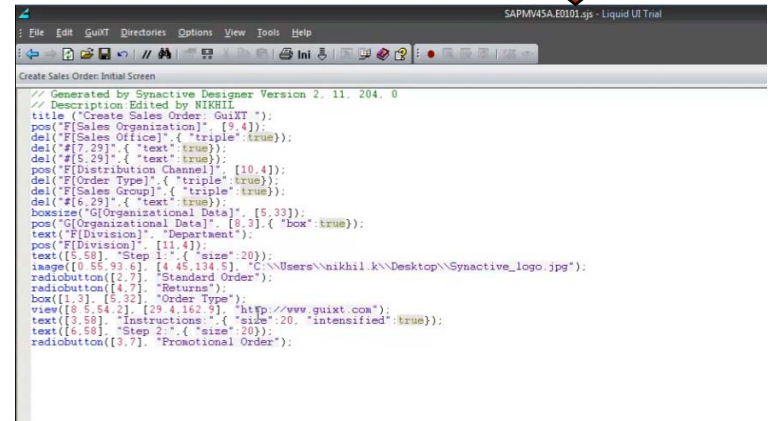
Designer



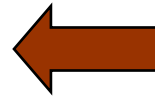
WYSIWYG



Modify

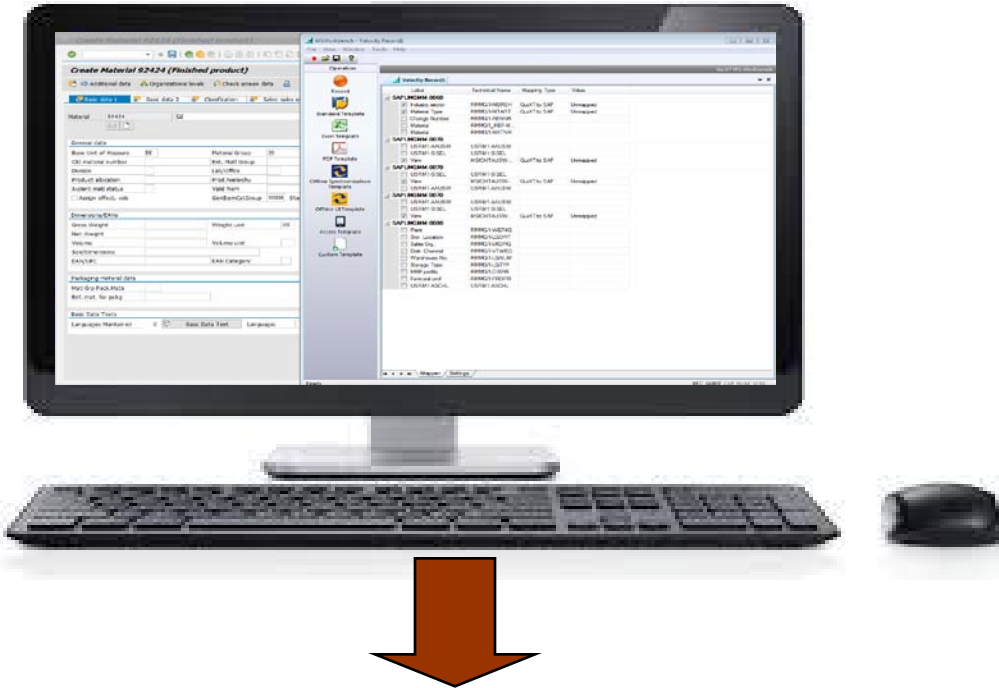


Scripts auto-generated



Deploy to any touch point

Workbench



Record your SAP process



Select Layout on Workbench



Scripts auto generated (Edit if needed)



Deploy to any touch point



Let Us Customize Your App in 21 days

The initial phase includes review and analysis your existing processes, interviewing functional process analysts or business users, and development of your business requirements.



Synactive will assist your IT staff in the installation and deployment of the application. We will review and document the requirements, install the application, confirm system functionality, and recommend the best deployment method to sustain desired performance levels.

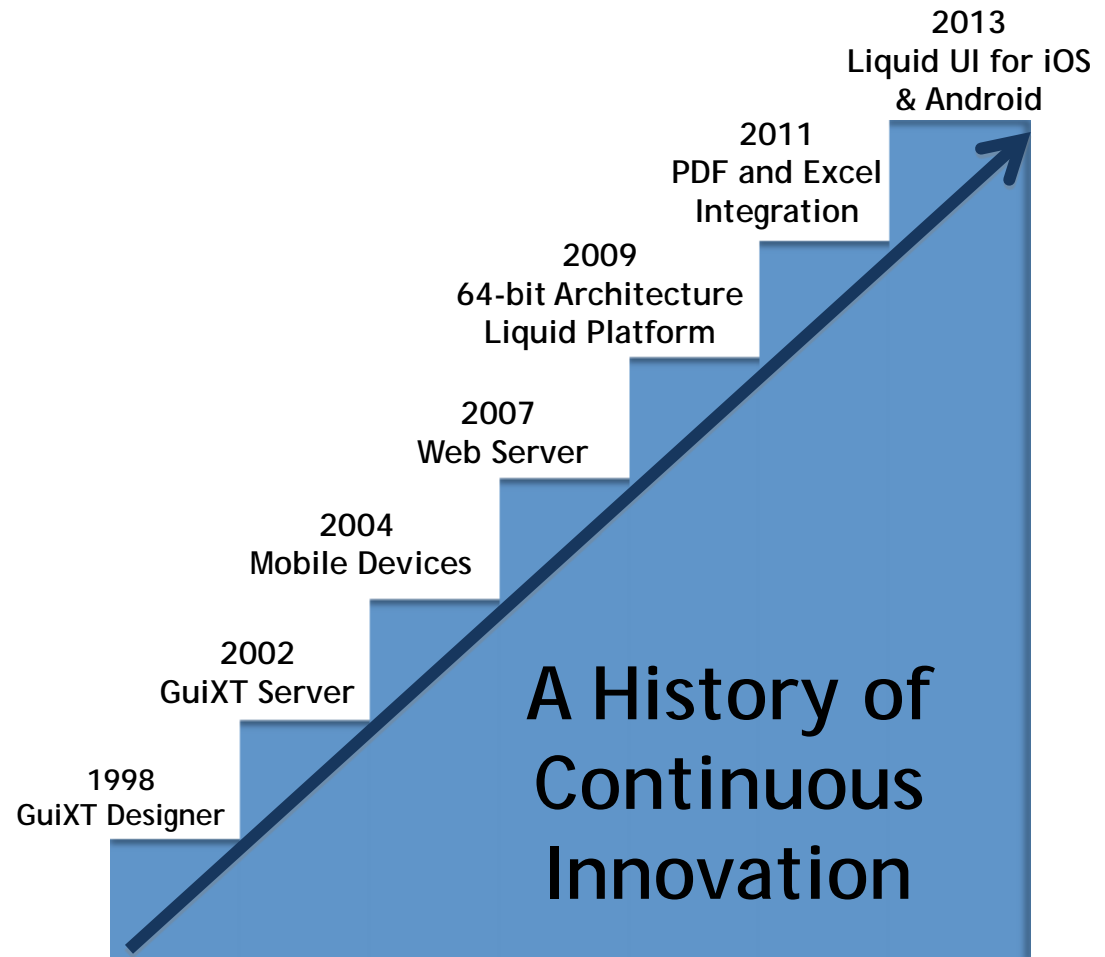
In this step, we collaborate with your team to discuss the learning from the discovery phase, and develop a design that meets your expectations, goals, and deliverables.

The development phase consists of simplifying and extending the newly created application to iOS, Android, mobile scanning devices, web/enterprise portals, Excel spreadsheets, Adobe PDF documents, or back to SAP GUI on the desktop. Unit testing is performed, and documentation is created.

Who we are....

Synactive @ a Glance

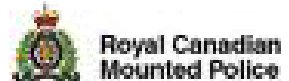
- **Founded by Gerd Rode and Thomas Ewe**
- **Embedded with SAP since 1998**
- **A Single Platform approach**
- **SAP Partner Certified with Net Weaver integration**
- **Thousands of users and 15 years of SAP UI domain knowledge**



In Good Company...over 1000 customers

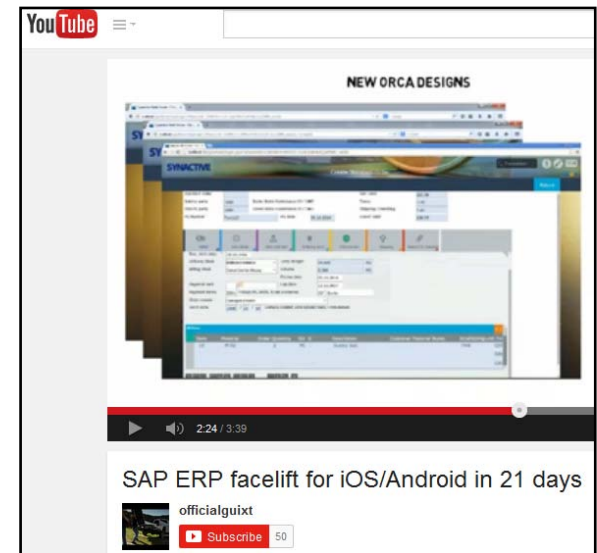


Mercedes-Benz



Next Steps

- Watch intro to [LiquidUI 3-min YouTube video](#) and pass it to your team and managers
- Pick SAP Module to customize – we will deliver a fully installed custom application in 21 days:
<http://www.guixt.com/yoursaperp>
- Pick a pre-built App – we will deploy in 1-3 days:
<http://www.guixt.com/rapidapps>
- Engage Synactive to reach your goals
- Join our new [Liquid UI Community](#) and be a part of our team



Unlock Yourself from SAP GUI and GO MOBILE!

- Download the native iOS or Android app, tell us what you like or don't like.
- As a token of our appreciation, everyone receives a free 30-day [Designer](#), [Plant Maintenance Console](#), [iOS](#), or [Android](#) license (including Support) after completing the [survey](#).

<http://mailguixt.actonsoftware.com/acton/form/4953/001b:d-0001/0/index.htm>

Win an
iPad Air
tomorrow!



Thank You

