

Liquid UI Designer WYSIWYG Window Shows Black Screen Issue

Purpose:

To resolve issue concerning Liquid UI Designer **WYSIWYG** window shows black screen.

Pre-requisites:

1. Liquid UI Activation.

Refer to the below Article, to verify whether Liquid UI is Activated or not.

<https://www.guixt.com/forum/index.php/topic,437.0.html>

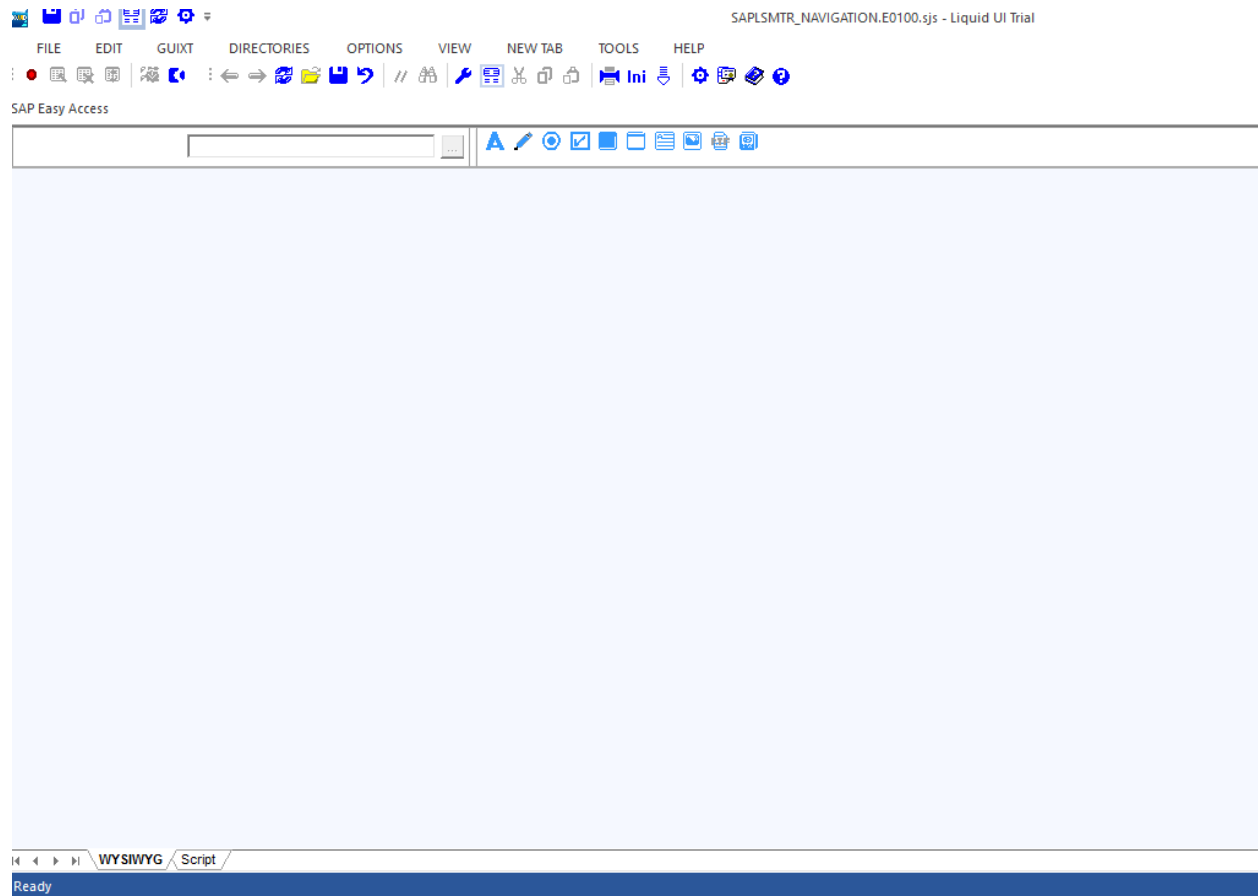
2. Liquid UI Designer Product Valid License.

To Request for a License or to the Check the validity Refer to the below article.

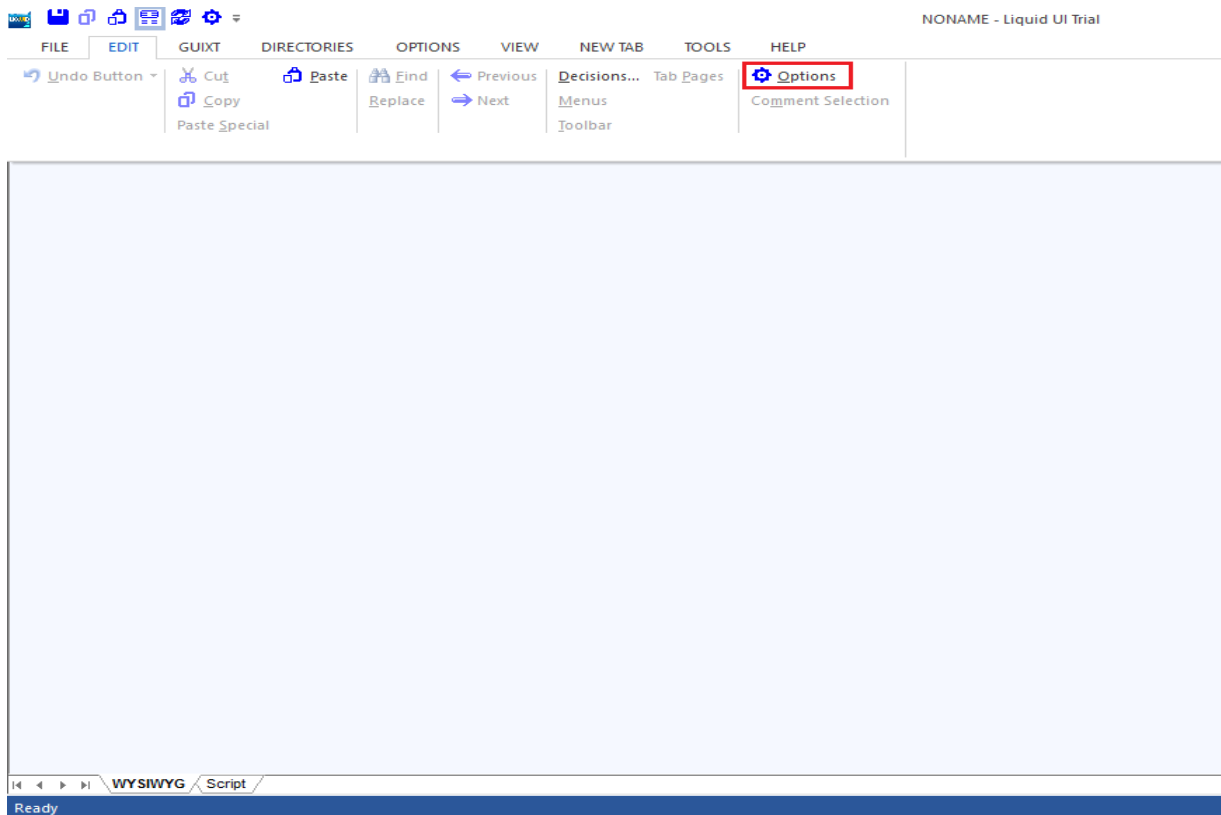
<https://www.guixt.com/forum/index.php/topic,228.0.html>

Please follow the below Steps:

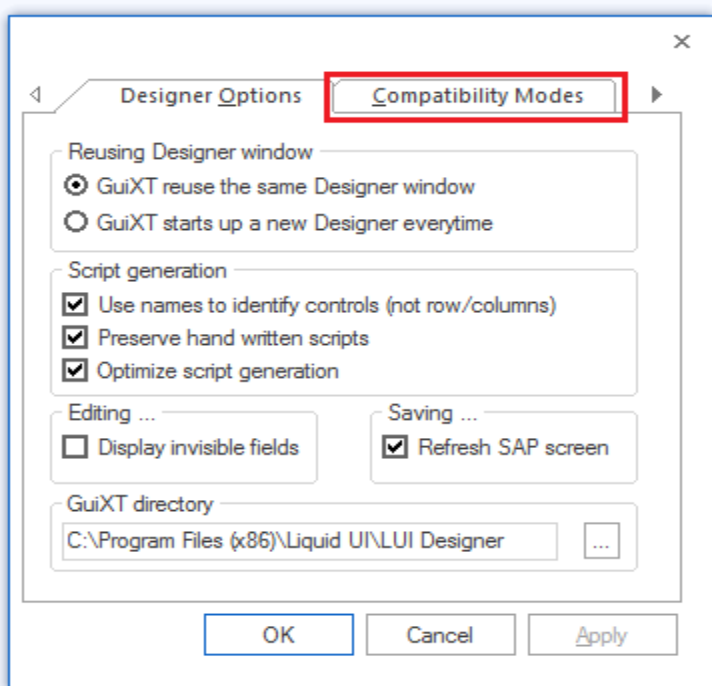
1. Launch the Liquid UI Designer.



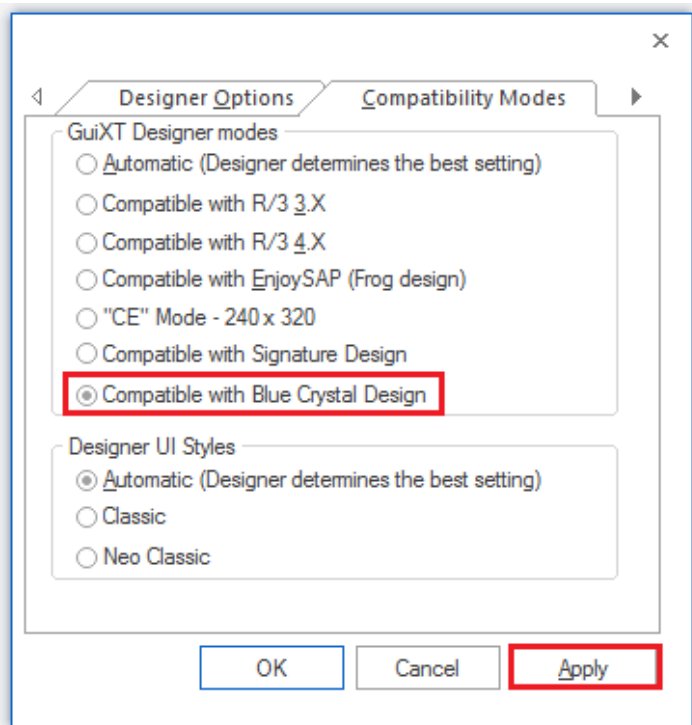
2. On the Menu Bar click on **EDIT**, and then click on **Options**.



3. A window will Pop-up, click on the "Compatibility Modes" Tab.



4. In **GuiXT Designer modes** select "**Compatible with Blue Crystal Design**", click on Apply.



Click on **OK**.

