

Selecting and De-selecting Checkbox in a Table

Purpose:

To Select and De-select the checkboxes present in column of a table.

Usage:

To select and de-select the checkbox in a table we need to use set command with tablename,columnname and row number.

Syntax to select:

```
set('cell[tablename,columnname,rownumber]', 'X'); // 'X' select the checkbox in table
```

Syntax to Deselect:

```
set('cell[tablename,columnname,rownumber]', ''); // blank value de-select the checkbox in table
```

Below is a simple example to demonstrate the selection and de-selection of a checkbox present in a table with functions called by pushbuttons.

Liquid Code:

```
//////////////////////////////// SAPLMEGUI.E0014.sjs //////////////////////////////////
```

```
pushbutton( [TOOLBAR], "Select Checkbox",{ "process":z_select_ckbx});
```

```
pushbutton( [TOOLBAR], "Deselect Checkbox",{ "process":z_deselect_ckbx});
```

```
function z_select_ckbx(){
```

```
    onscreen 'SAPLMEGUI.0014'
```

```

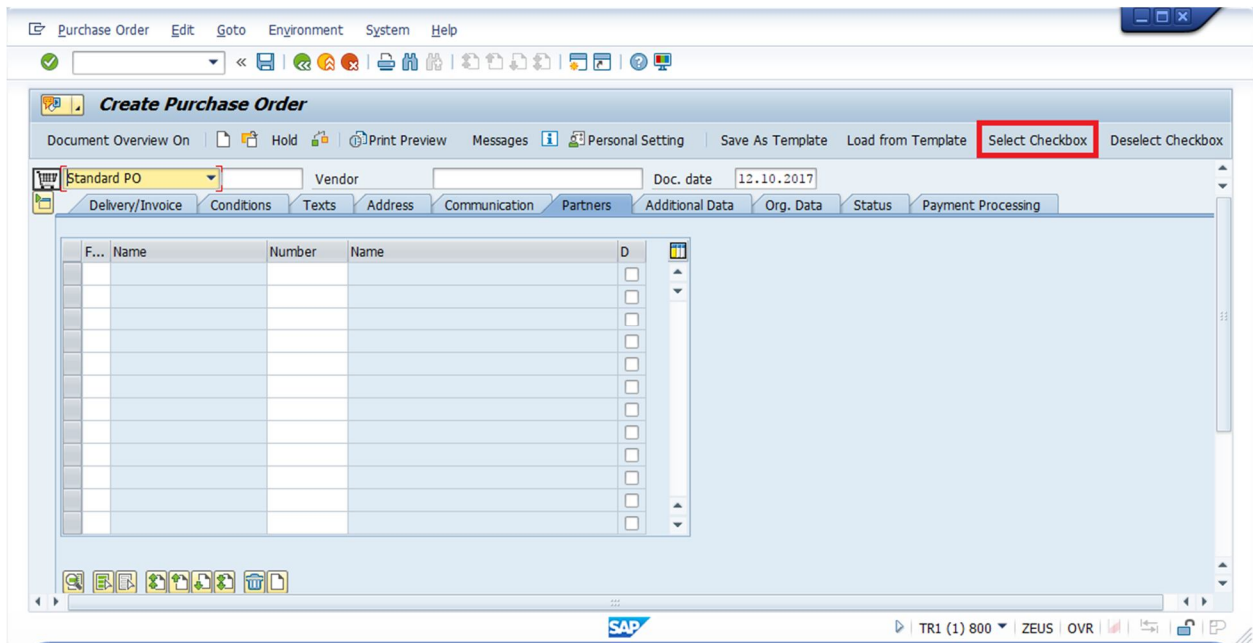
    set('cell[TABLE,D,1]', 'X'); // select checkbox in first row
    enter("?");
}

function z_deselect_ckbx(){
    onscreen 'SAPLMEGUI.0014'

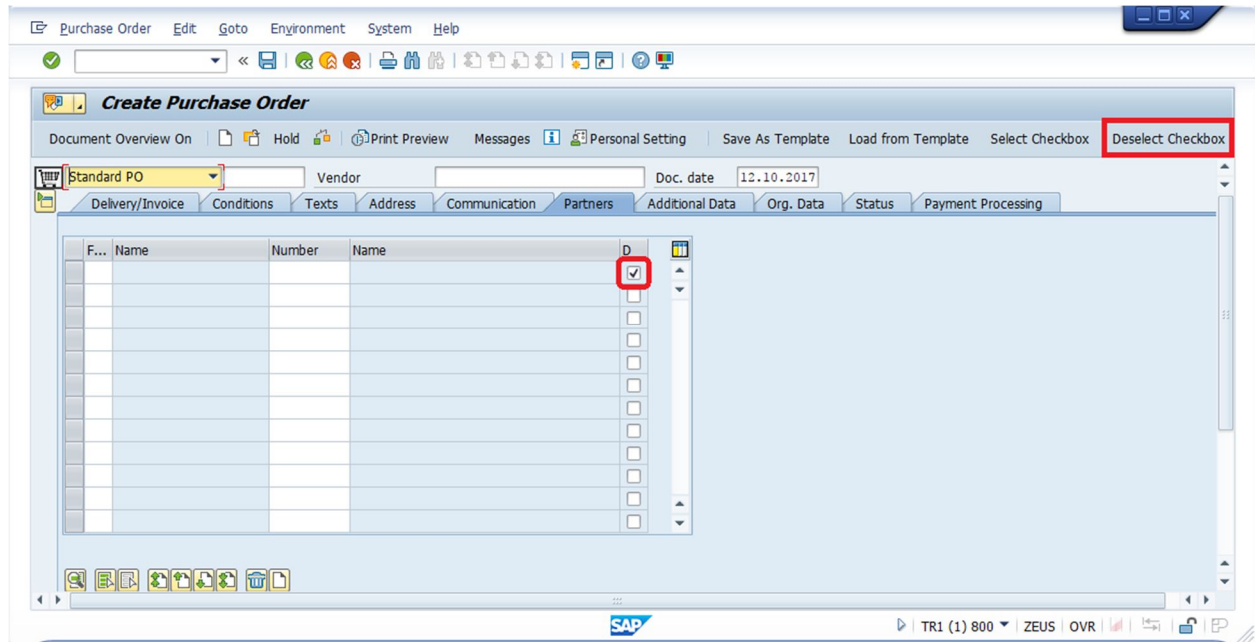
    set('cell[TABLE,D,1]', ''); // de-select checkbox in first row
    enter("?");
}

```

Navigate to “Partners” tab in “ME21N” and click on “Select Checkbox” button on toolbar.



You can see checkbox selected, now click on “Deselect Checkbox” button on toolbar.



Checkbox will be deselected.