

## Restrict F4 List using LUI Designer

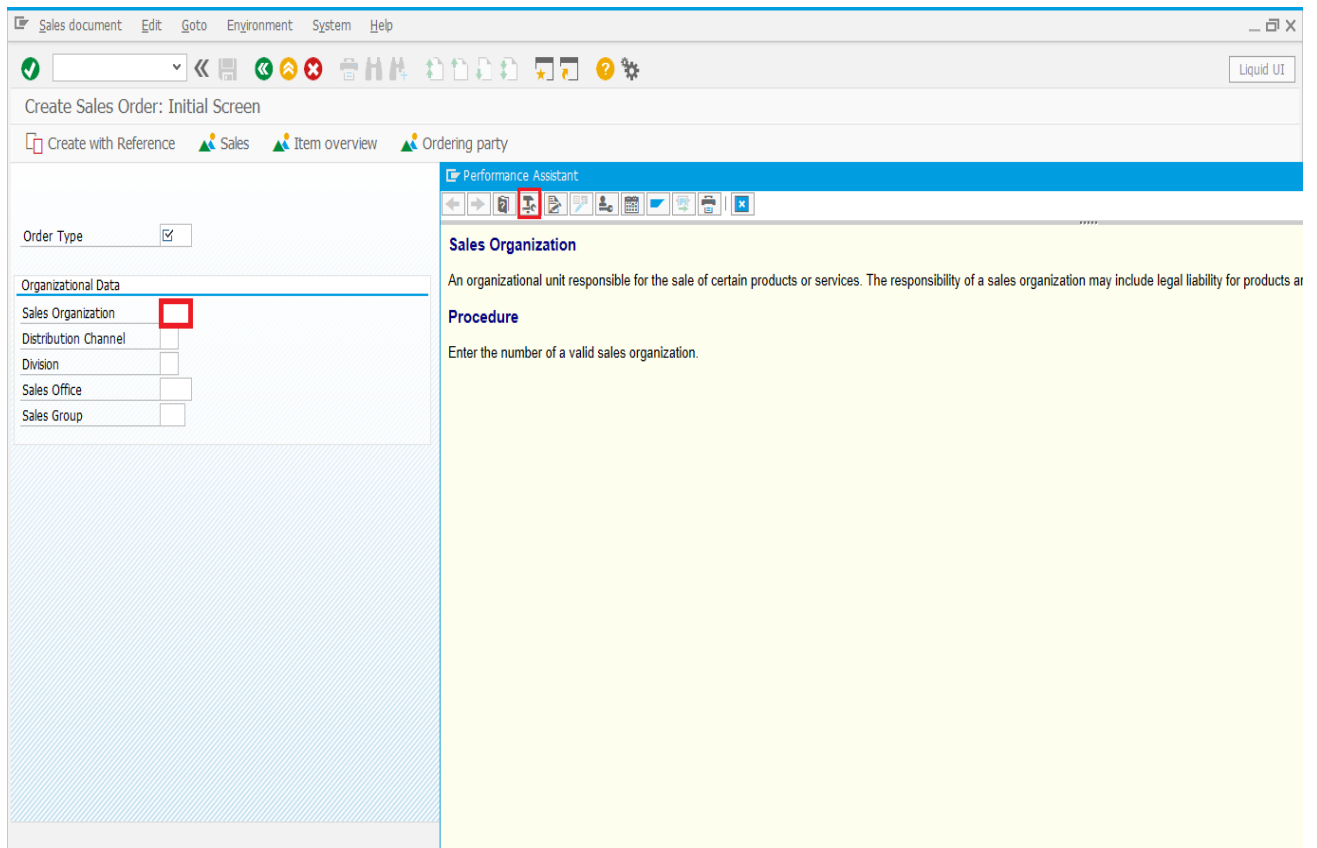
### **Purpose:**

The Restrict F4 List for input fields provides a Restrict list of available entry values for a given input field.

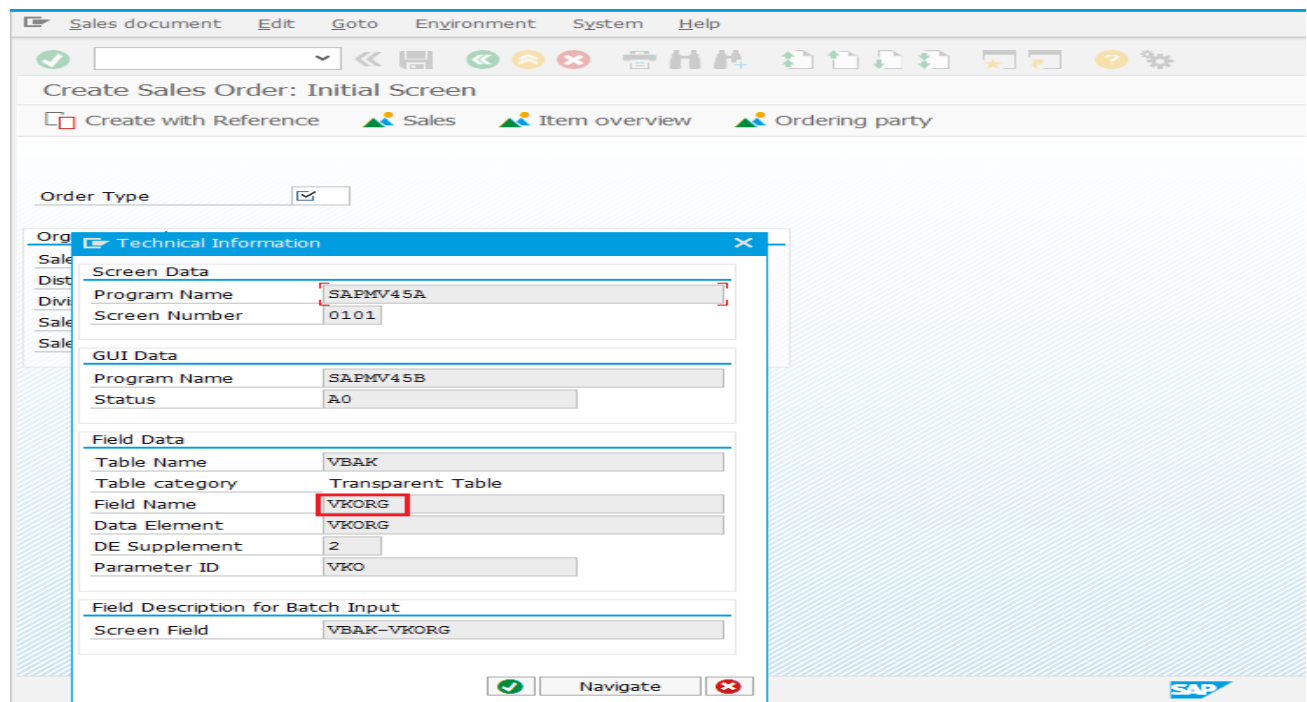
### **Pre-requisites:**

**Finding the “Search Help Name” and “Field Name” of a particular field.**

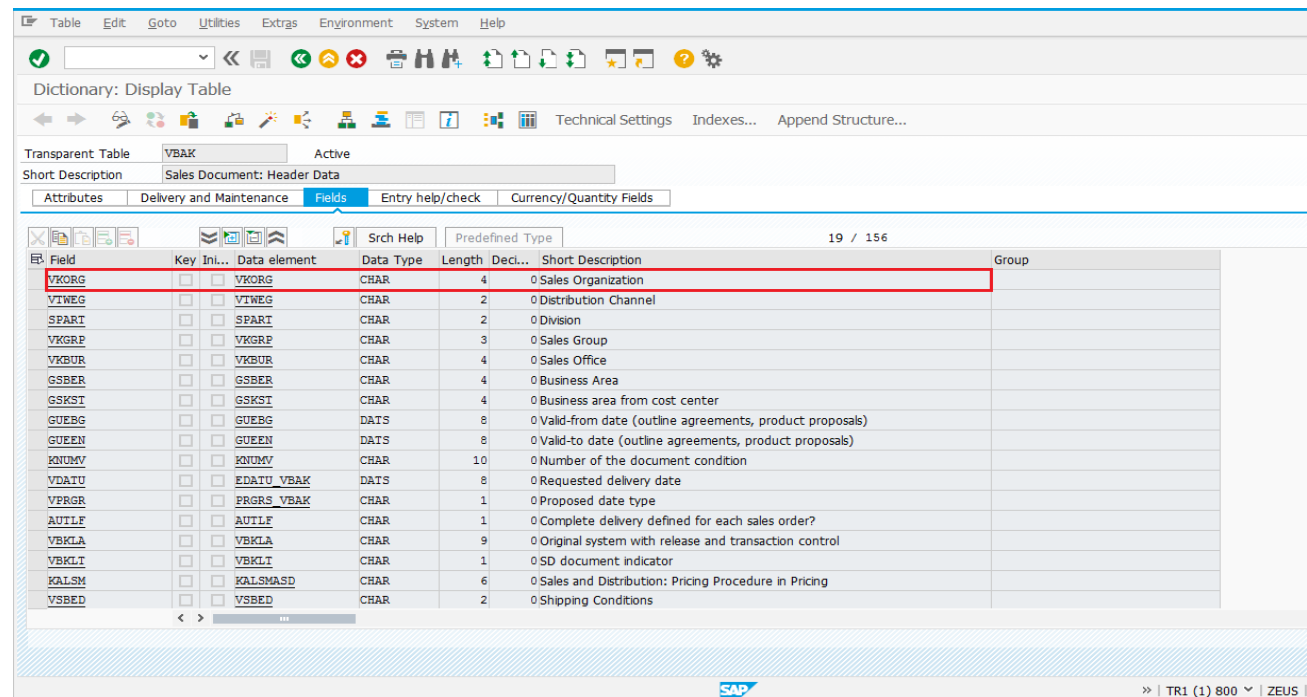
1. Press F1 key on the desired Field, “Performance Assistant” will pop up.
2. Click on the push button “Technical Information”.



3. Double click on "Field name".



4. Double click on First Cell within the table as shown.



You will get the search Help Name as Shown Below.

TableEditGotoUtilitiesExtrasEnvironmentSystemHelp

Dictionary: Display Table

Technical SettingsIndexes...Append Structure...

Transparent TableVBAKActive

Short DesDisplay Field VBAK-VKORG

Attrib

Field

VKORG

VIWE

SPAR

VKGR

VKBUI

GSBE

GSKS

GUEB

GUEE

KNUM

VDAI

VPRG

AUTL

VBKL

VBKL

KALS

VSBE

Data element attribute

Data elementVKORG

Short DescriptionSales Organization

DomainVKORG

Data TypeCHAR

No. of Characters4☐ Sign

☐ AM/PM-Enabled

Output Length4

Default field nameSALESORG

☐ Basic direction is set to LTR

☐ No BIDI Filtering

☐ No Input History

Input Help

Origin of the input helpInput help implemented with check table

Search Help NameH\_IVKO

☐ Fixed val. ex.

DomainVKORG

☒ Foreign key exists

Check tableTVKO

Database Attributes

☐ Key field

☐ Initialize

Internal Format

ABAP typeC

Internal Length8

Entry19 / 156

Search Help for Field

19 / 156

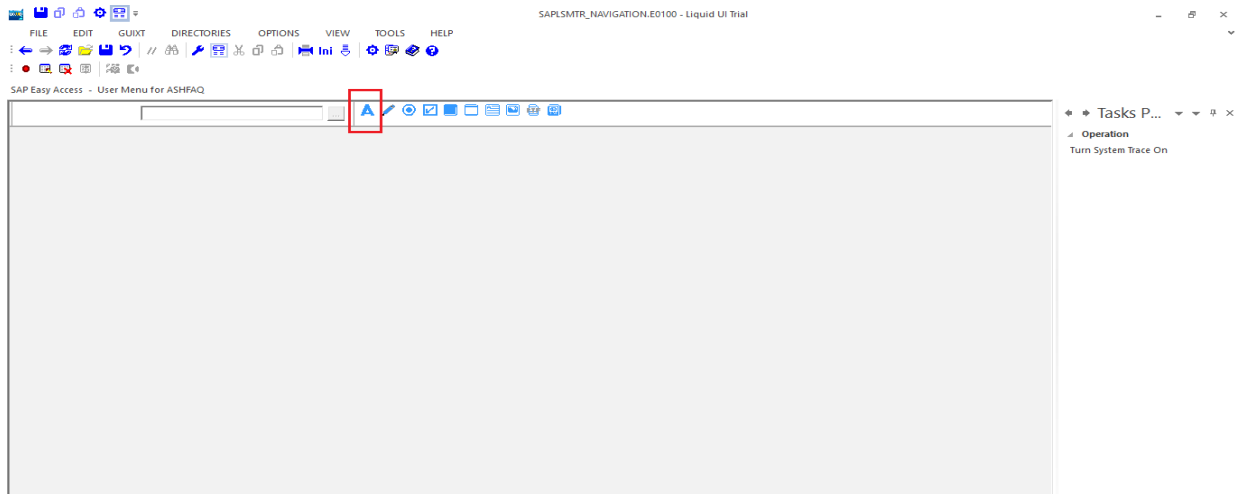
duct proposals)  
ct proposals)order?  
on control

n Pricing

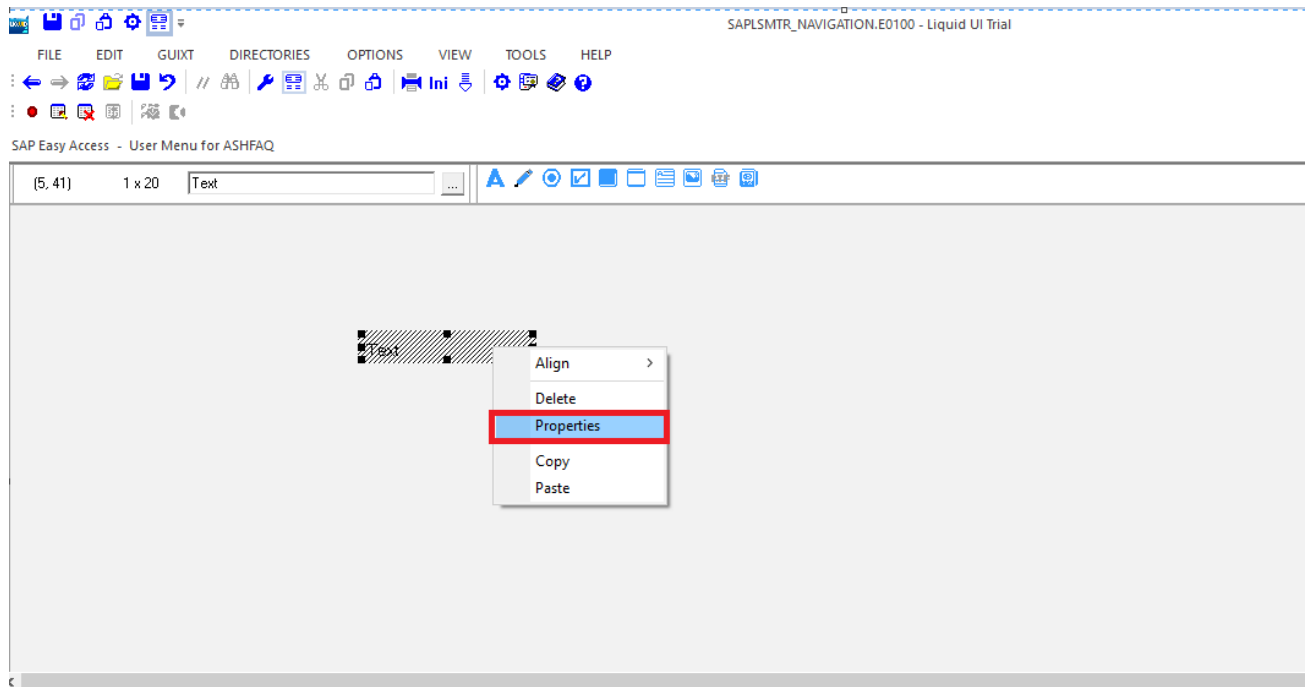
## Example:

Following are the steps that shows the implementation of Restrict F4 List in LUI Designer

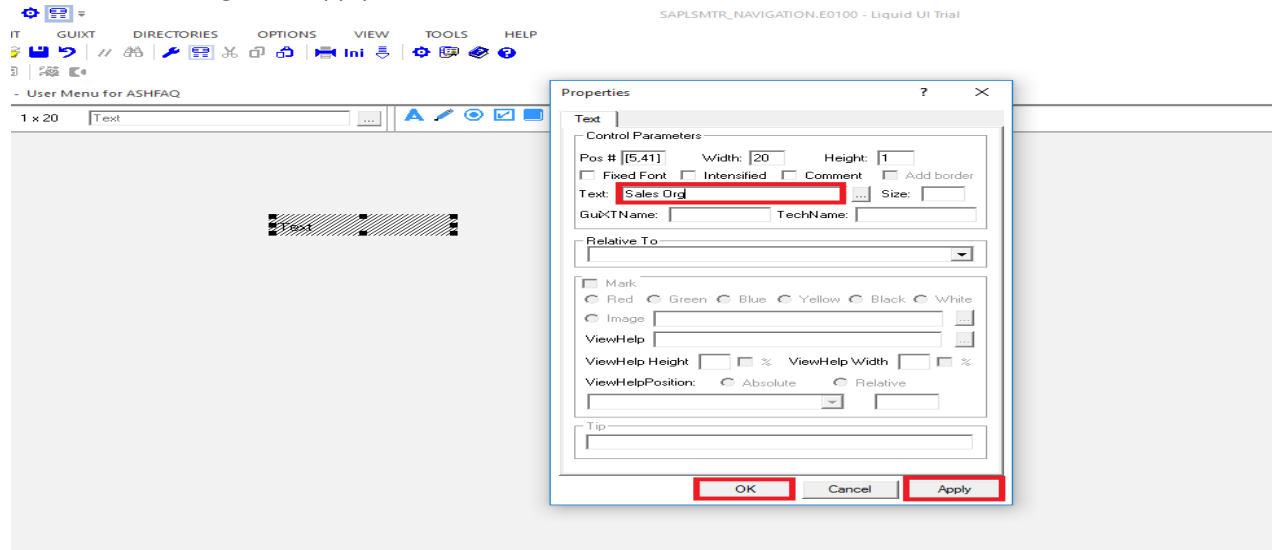
1. Launch the LUI Designer and Open the SAP Easy Access Screen. (SAPLSMTR\_NAVIGATOR.E0100.sjs)
2. Create Text, by clicking on the Button as shown.



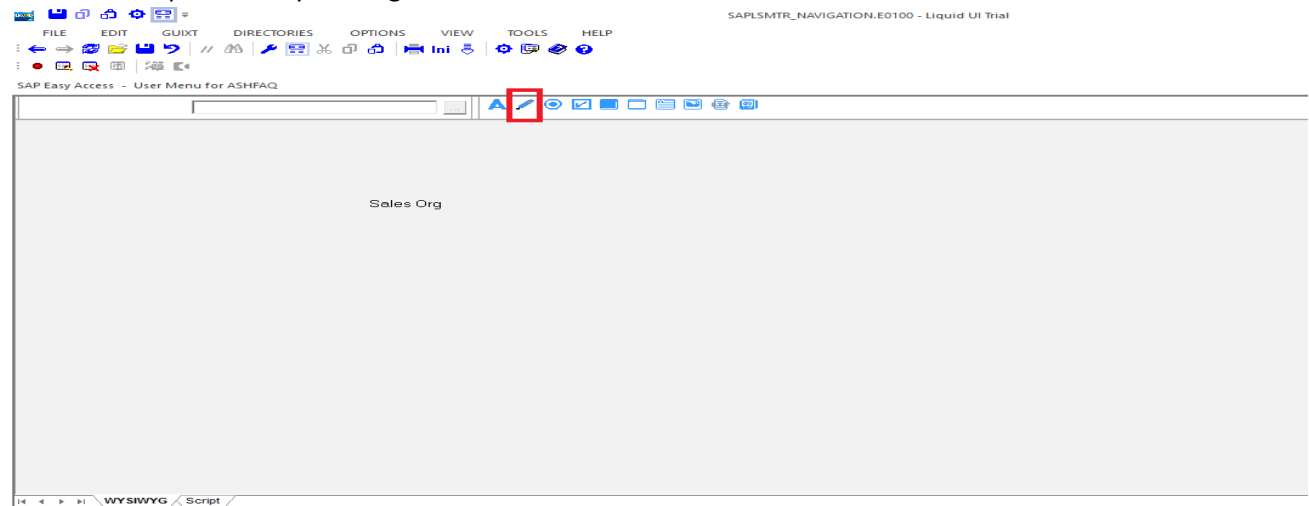
Right Click and select the Properties option.



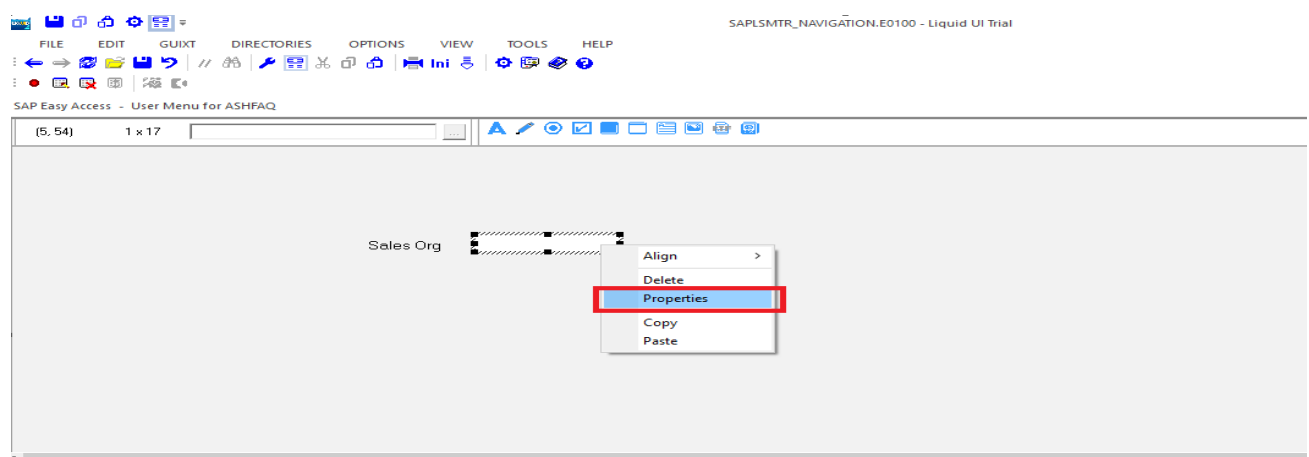
Name as Sales Org, click Apply and then Ok.



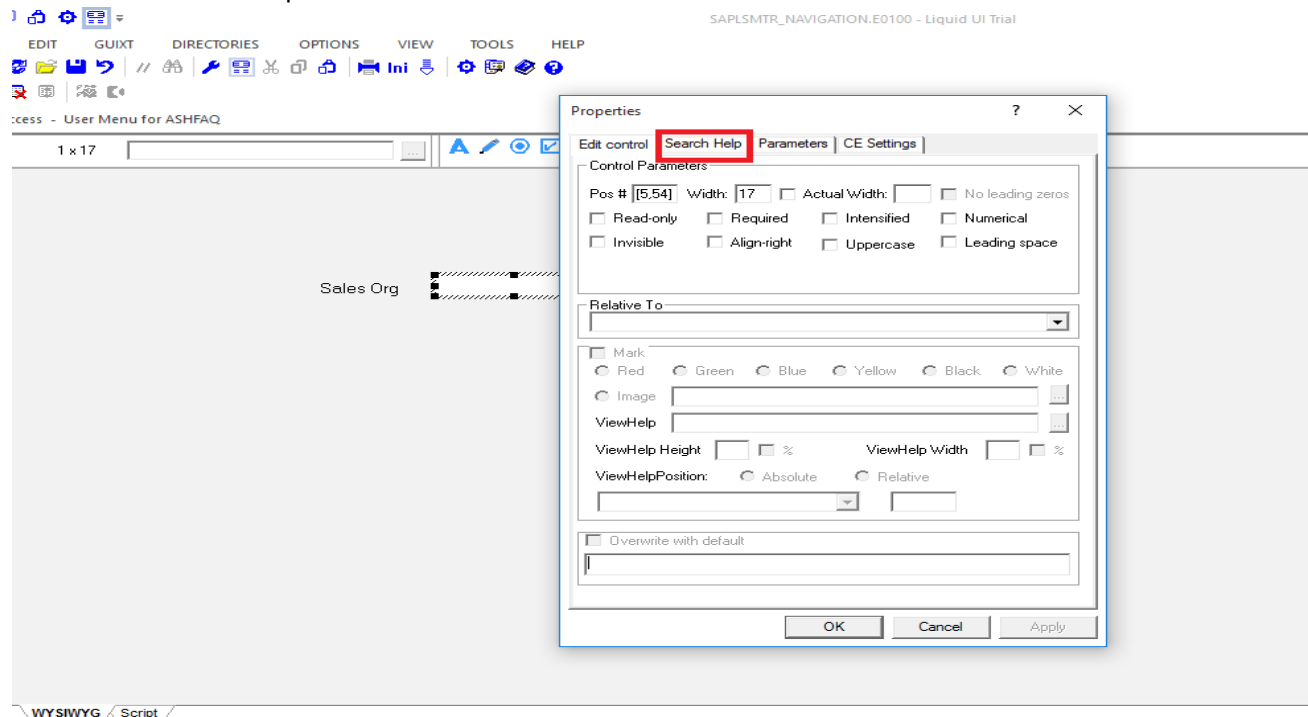
Create the Input Field by clicking on the Button as Shown.



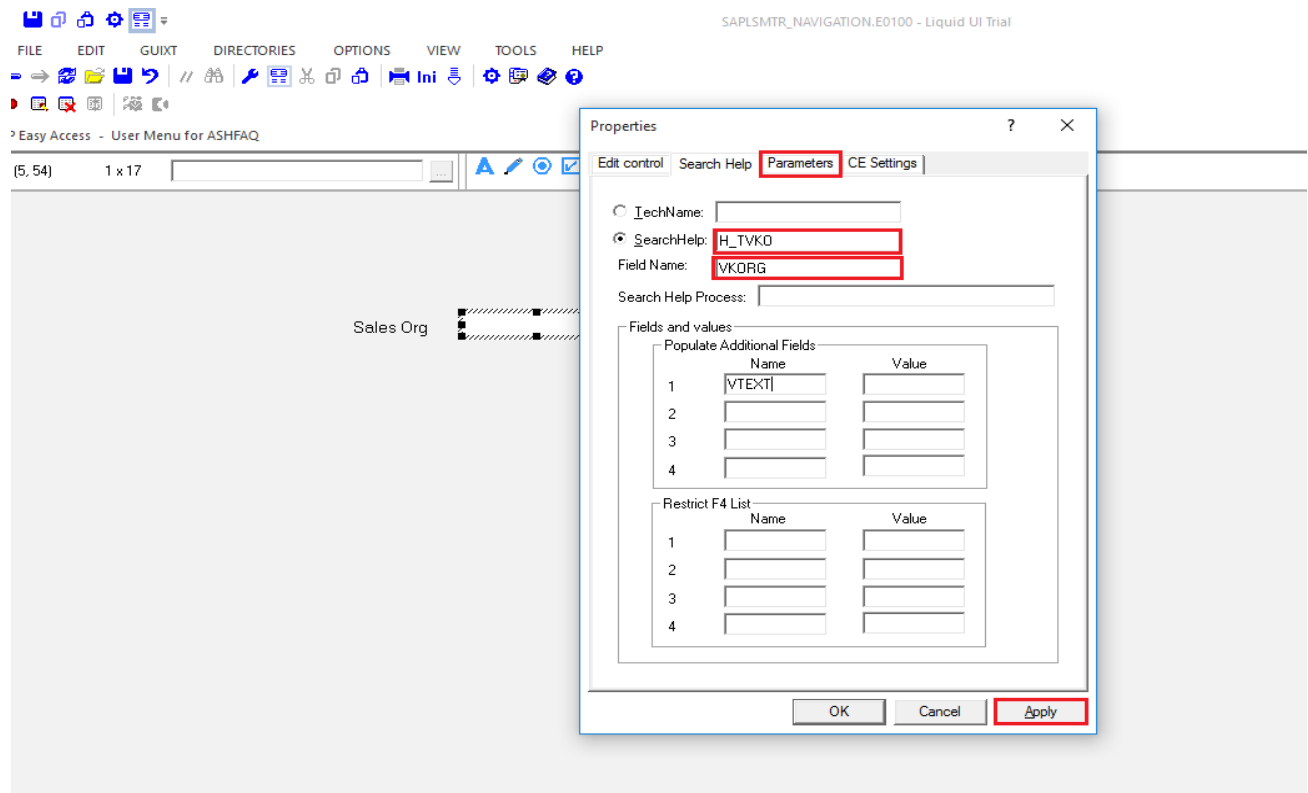
Right Click and select the Properties Option.



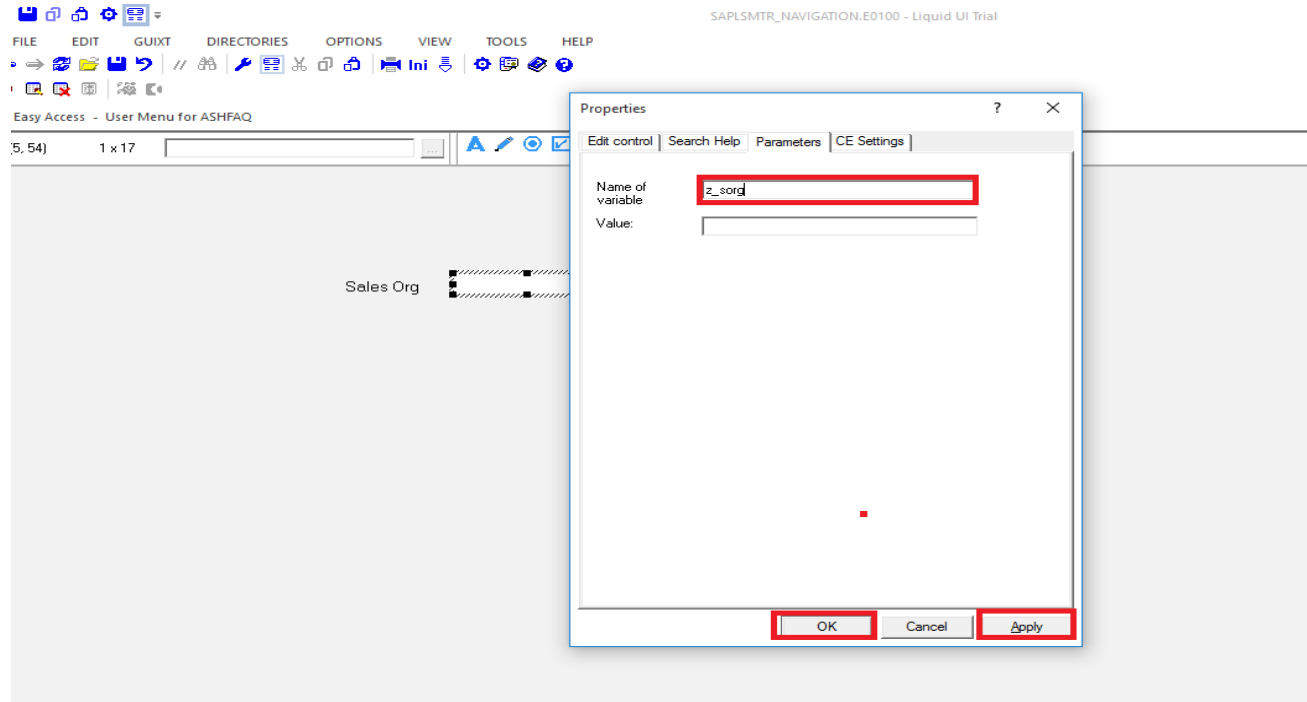
Click on the Search Help.



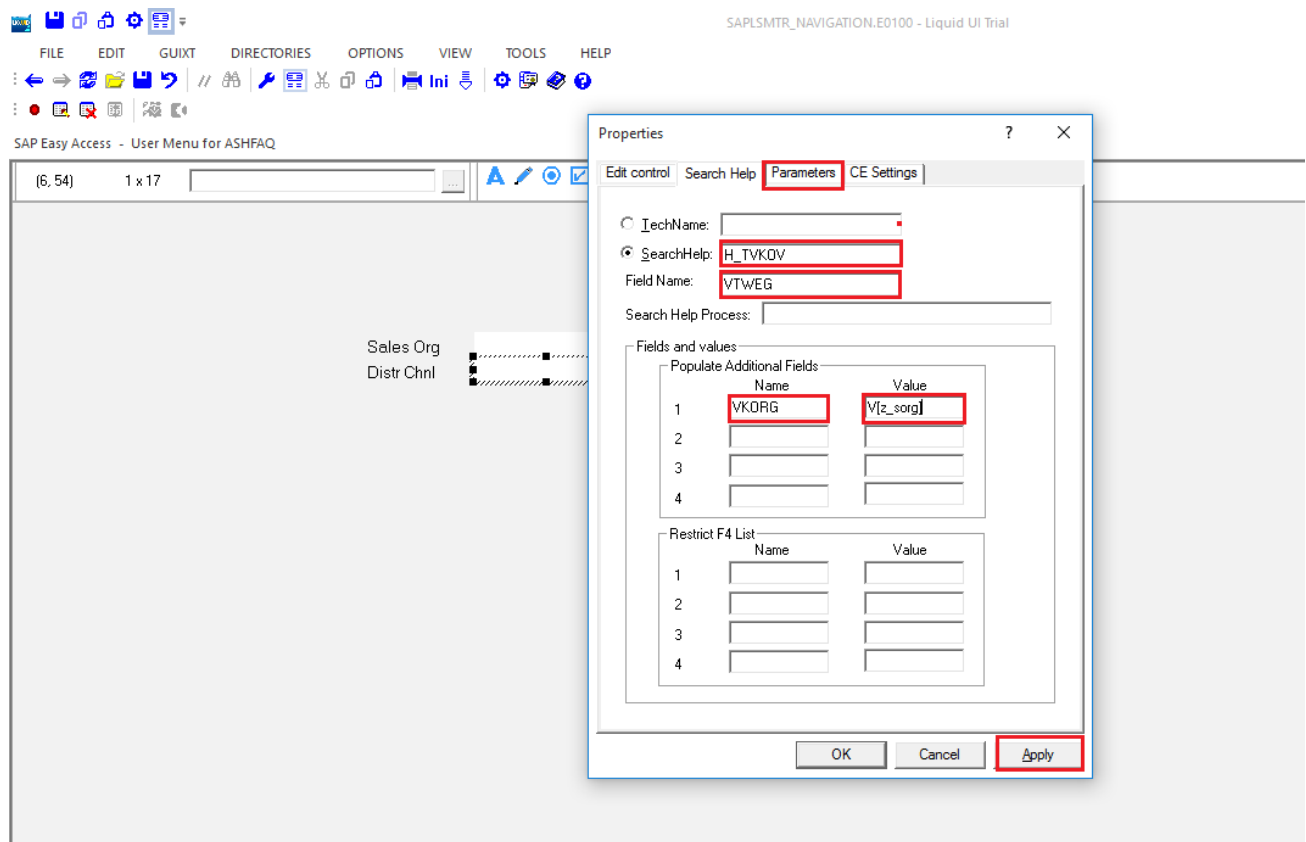
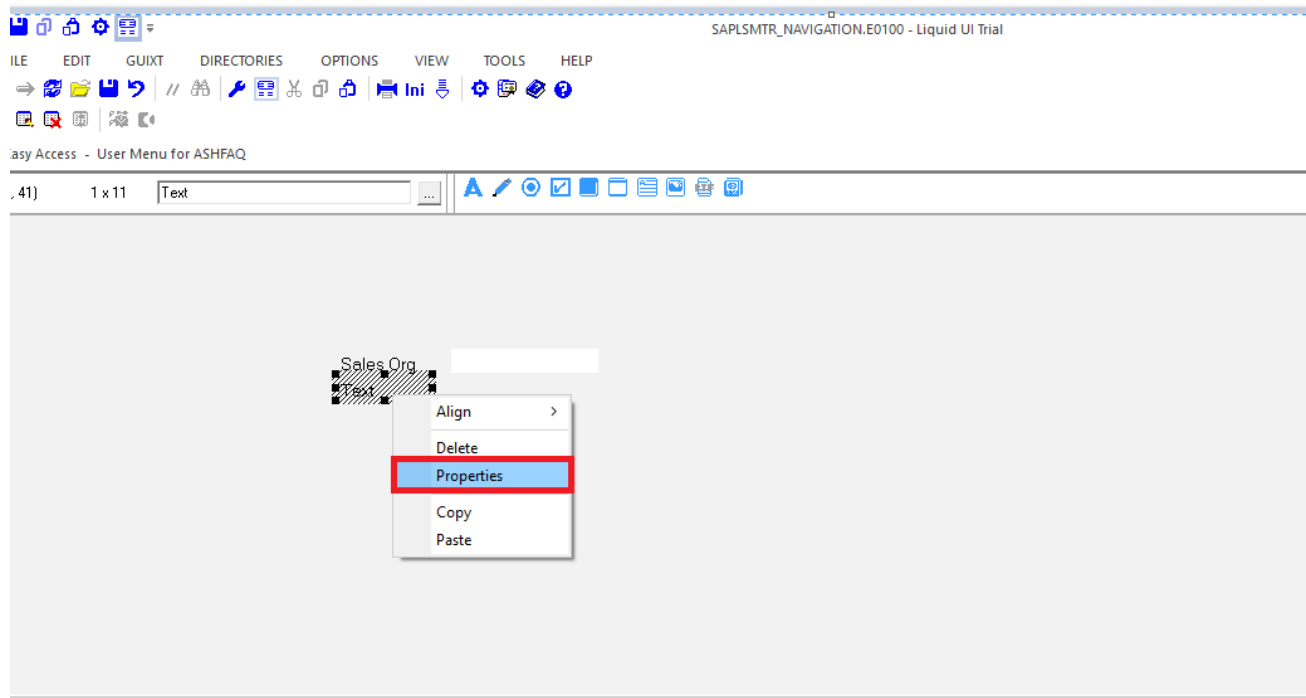
Fill Up the Properties, Click Apply and then click the parameters tab.



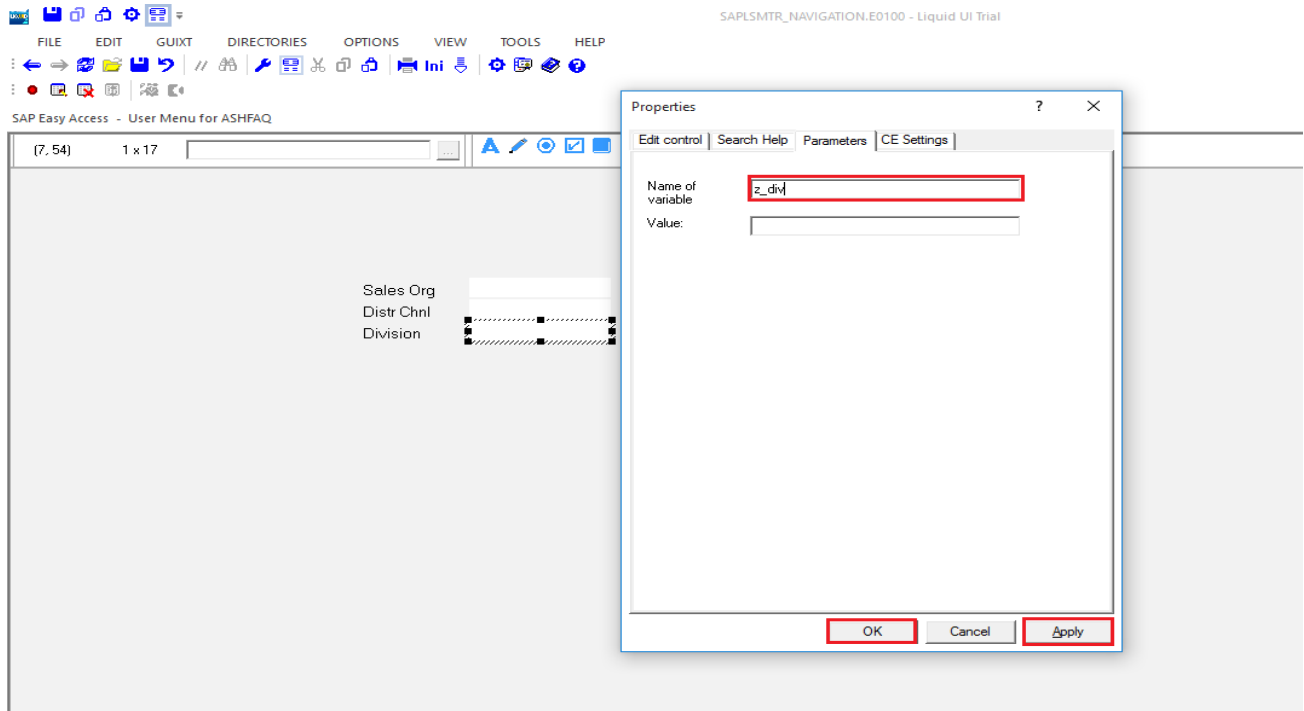
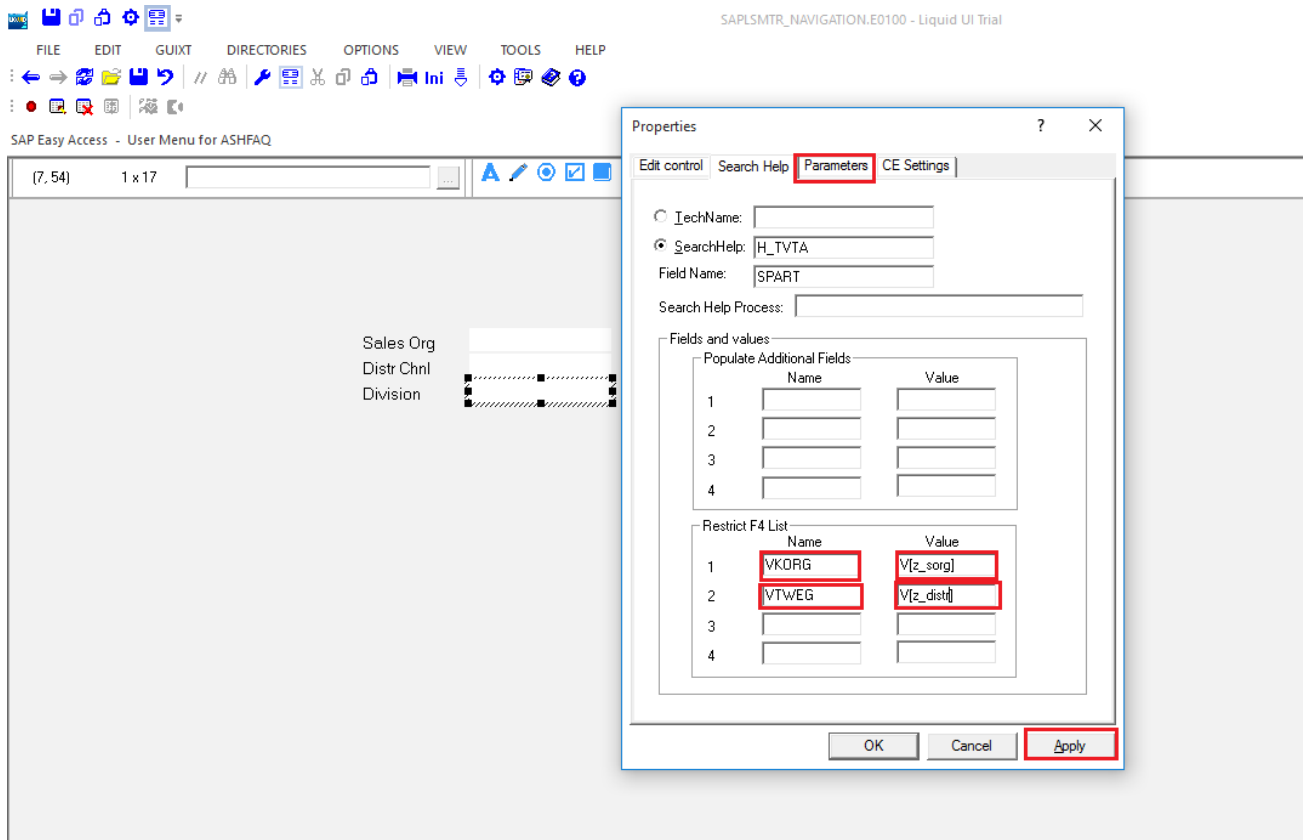
Enter the name of the variable and Click Ok

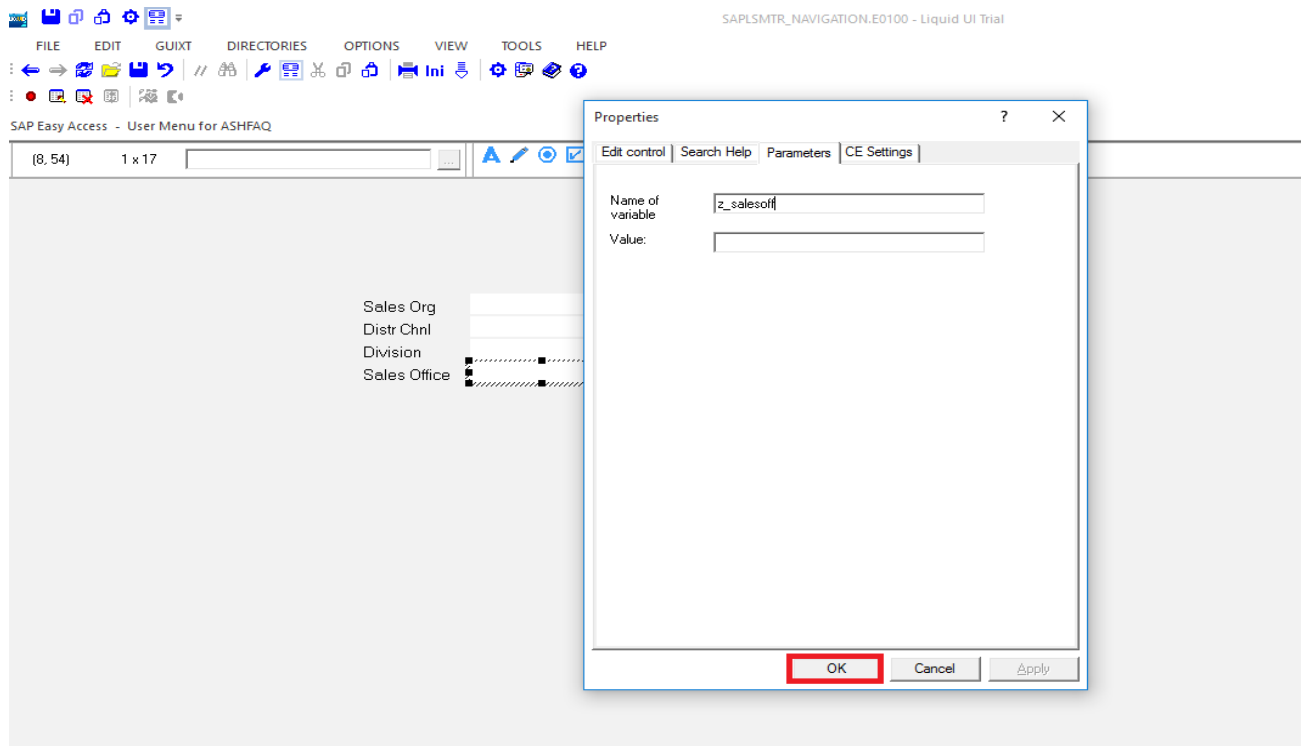
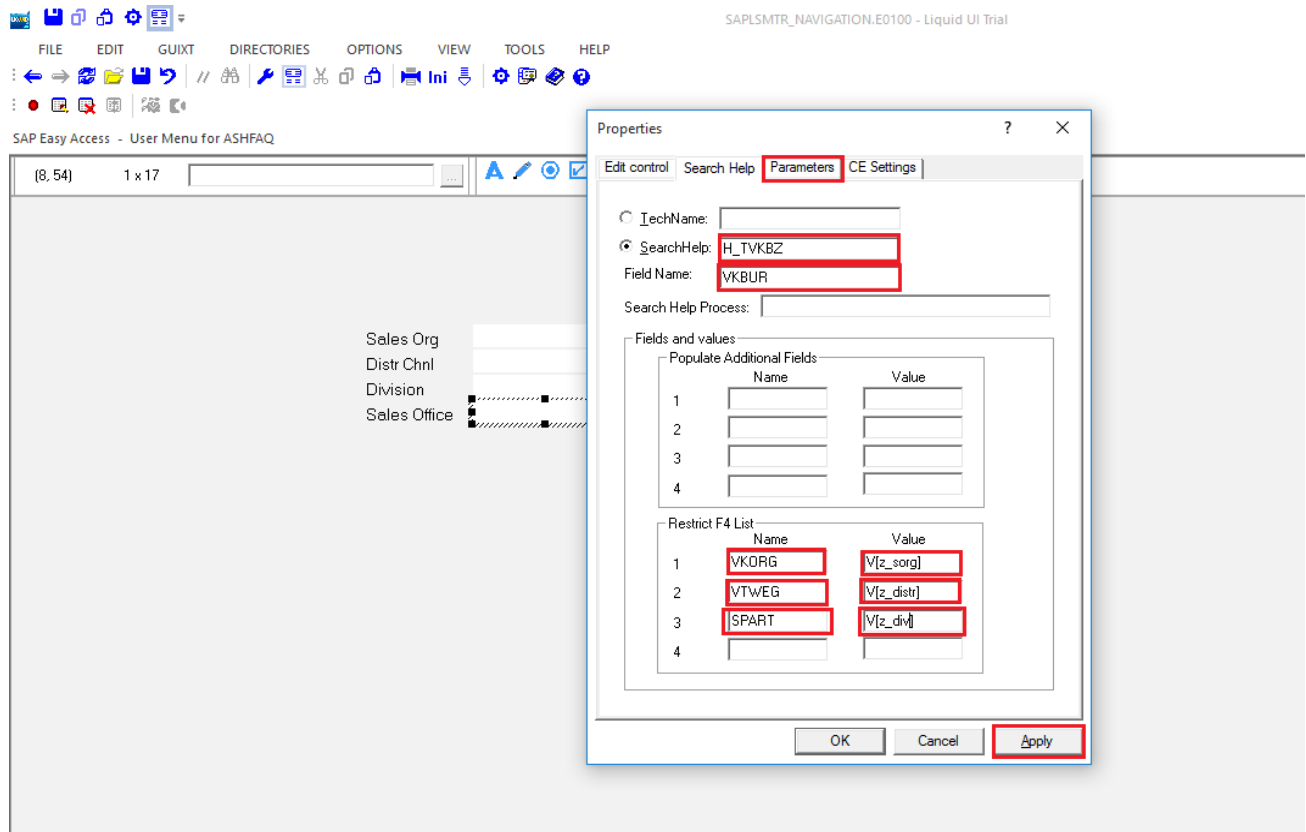


Repeat the Steps by Creating three more Fields “Dist Chnl”, “Div.”, “Sales Office” and Fill up the properties as shown









Enter the Sales Org “1000” and click search help button for the “Dist. Chnl”

SAP Easy Access - User Menu for ASHFAQ

Other menu Create role Assign users Documentation

Sales Org 1000  
Distr Chnl  
Division  
Sales Office

It will Restrict the values and Displays only the “Distr Chnl “values that are associated or comes under the Sales Org “1000

SAP Easy Access - User Menu for ASHFAQ

Hit List 291 Entries

| SOrg. | DChl | Name                 |
|-------|------|----------------------|
| 0001  | 01   | General Trade        |
| 0001  | 02   | Exports              |
| 0001  | C1   | Direct Sales         |
| 0005  | 01   | General Trade        |
| 0005  | 02   | Exports              |
| 0005  | 10   | Final customer sales |
| 0005  | 12   | Sold for resale      |
| 0005  | 14   | Service              |
| 0005  | 16   | Factory sales        |
| 0005  | A2   | Retail LUI           |
| 0006  | 01   | General Trade        |
| 0006  | 02   | Exports              |
| 0006  | 10   | Final customer sales |
| 0006  | 12   | Sold for resale      |
| 0006  | 14   | Service              |
| 0006  | A2   | Retail LUI           |
| 0007  | 01   | General Trade        |
| 0007  | 02   | Exports              |
| 0007  | 10   | Final customer sales |
| 0007  | 12   | Sold for resale      |
| 0007  | 14   | Service              |
| 0007  | 16   | Factory sales        |
| 0007  | A2   | Retail LUI           |
| 0008  | 01   | General Trade        |
| 0008  | 02   | Exports              |
| 0008  | 10   | Final customer sales |
| 0008  | 12   | Sold for resale      |
| 0008  | 14   | Service              |
| 0008  | A2   | Retail LUI           |
| 1000  | 01   | General Trade        |
| 1000  | 02   | Exports              |
| 1000  | 10   | Final customer sales |

Sales Org 1000  
Distr Chnl  
Division  
Sales Office

Enter Sales Org as “1000”, Distr Chnl as “10” and for the Division, click on the search help button as shown.

The screenshot shows the SAP Easy Access - User Menu for ASHFAQ. The search criteria are as follows:

|              |      |
|--------------|------|
| Sales Org    | 1000 |
| Distr Chnl   | 10   |
| Division     |      |
| Sales Office |      |

The Division field is highlighted with a red box, and the search help button (magnifying glass icon) is also highlighted with a red box.

It will Restrict the value and Displays only the Divisions that are associated or comes under the Sales Org “1000”, Distr Chnl “10”, as shown below.

The screenshot shows the SAP Easy Access - User Menu for ASHFAQ. The search criteria are as follows:

|              |      |
|--------------|------|
| Sales Org    | 1000 |
| Distr Chnl   | 10   |
| Division     |      |
| Sales Office |      |

The Division field is highlighted with a red box, and the search help button (magnifying glass icon) is also highlighted with a red box.

The search results are displayed in a list box titled "Hit List 8 Entries". The list shows the following entries:

| Dv | Name           |
|----|----------------|
| 00 | Cross-division |
| 01 | Biscuits       |
| 05 | Foods          |
| 06 | Elevators      |
| 07 | High Tech      |
| 08 | Service        |
| 20 | Turbines       |
| A1 | Vehicles       |

The list box is highlighted with a red box, and the search help button (magnifying glass icon) is also highlighted with a red box.

Enter Sales Org as “1000”, Distr Chnl as “10”, Divisions as “00” and for the Sales Office click on the search help button as shown below.

SAP Easy Access - User Menu for ASHFAQ

Other menu   Create role   Assign users   Documentation

Sales Org: 1000  
 Distr Chnl: 10  
 Division: 00  
 Sales Office: 51

SAP

It will Restrict the values and Displays Only Sales Office that are associated or comes under the Sales Org “1000”, Distr Chnl “10”, Division “00” as shown below

SAP Easy Access - User Menu for ASHFAQ

Other menu   Create role   Assign users   Documentation

Hit List 3 Entries

|                      |      |
|----------------------|------|
| Sales Organization   | 1000 |
| Distribution Channel | 10   |
| Division             | 00   |

| SOff. | Description      |
|-------|------------------|
| 1000  | Office Frankfurt |
| 1010  | Office Hamburg   |
| 1030  | Office Stuttgart |

✓
⌵
⌵
✗

Sales Org: 1000  
 Distr Chnl: 10  
 Division: 00  
 Sales Office: 51

SAP

**Code is as Follows:**

```
del("X[IMAGE_CONTAINER]");
```

```
inputfield( [5,41], "Sales Org", [5,54],{ "name":"z_sorg",  
"shname":"VKORG", "size":17, "shname1":"VTEXT",  
"searchhelp":"H_TVKO"});
```

```
inputfield( [6,41], "Distr Chnl", [6,54],{ "name":"z_distr",  
"shname":"VTWEG", "size":17, "shdest1":"V[z_sorg]",  
"shname1":"VKORG", "searchhelp":"H_TV KOV"});
```

```
inputfield( [7,41], "Division", [7,54],{ "name":"z_div",  
"shname":"SPART", "size":17, "shselvalue1":"V[z_sorg]",  
"shselname1":"VKORG", "shselvalue2":"V[z_distr]",  
"shselname2":"VTWEG", "searchhelp":"H_TVTA"});  
del("X[IMAGE_CONTAINER]");
```

```
inputfield( [8,41], "Sales Office", [8,54],{ "name":"z_salesoff",  
"shname":"VKBUR", "size":17, "shselvalue1":"V[z_sorg]",  
"shselname1":"VKORG", "shselvalue2":"V[z_distr]",  
"shselname2":"VTWEG", "shselvalue3":"V[z_div]",  
"shselname3":"SPART", "searchhelp":"H_TVKBZ"});
```