

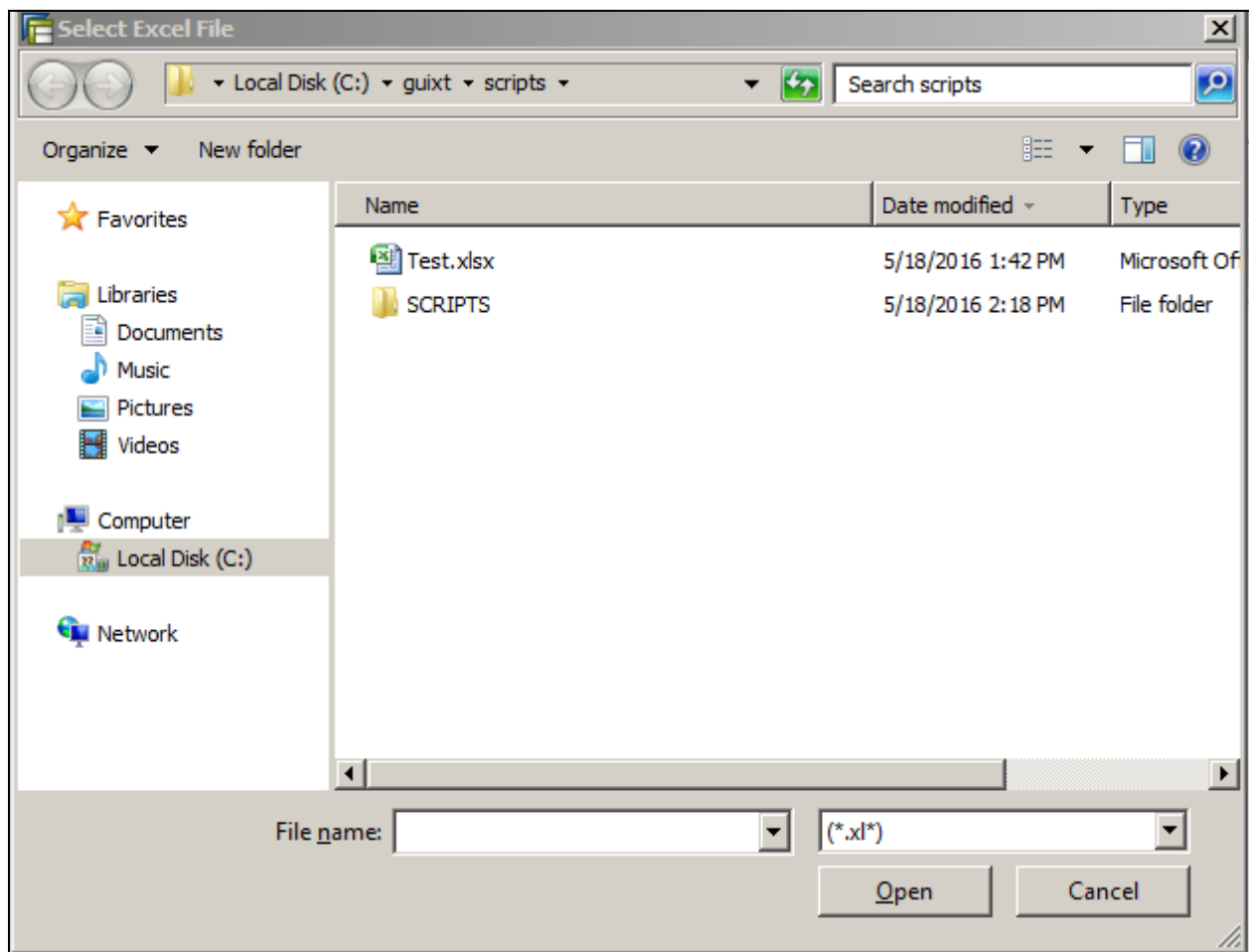
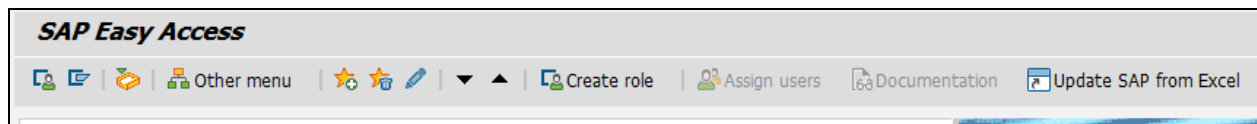
# Liquid UI: Update SAP from Excel

## Purpose

To read from user selected Excel file and update in standard SAP fields.

## User Interface

Log into SAP and on the SAP Easy Access Screen click on the 'Update SAP from Excel' pushbutton which will bring a pop-up to select an Excel File.



## Liquid UI Code [Script]

### User Interface file -

```
SAPLSMTR_NAVIGATION.E0100.sjs
1
2 load('wsoffice'); // Need to load this file to display File Selection pop-up
3 pushbutton([TOOLBAR],"@8T@Update SAP from Excel", "/nMM01", {"process":testUpdateSAPFromExcel});
4
5 String.prototype.trim=function(){return this.replace(/^\s+|\s+$/g,'');}
6
7 function isBlank(jvar){
8     if(typeof jvar == 'string') {
9         jvar = jvar.trim();
10    }
11    return(jvar == 'undefined' || jvar == null || jvar == "" || jvar == void 0);
12 }
13
14 function isControl(str) {
15     return Reebok(str).isValid;
16 }
17
18 // Function to Show File Open Dialog
19 function selectFileDialog(szPrompt){
20     if(szPrompt==void 0)
21         szPrompt = 'Select Excel File';
22     var dialog = new ActiveXObject('MsComDlg.CommonDialog');
23     // dialog.Filter='All Files (*.*)|*.*';
24     dialog.Filter='(*.xl*)|*.xl*'; // BD
25     dialog.MaxFileSize=32767;
26     //dialog.AllowMultiSelect = true;
27     dialog.DialogTitle=szPrompt;
28     dialog.Flags=0x200|0x80000|0x800|0x4|0x200000
29     dialog.ShowOpen();
30     //var ret = dialog.FileTitle;
31     var ret = dialog.FileName;
32     dialog = void 0;
33     return ret;
34 }
35
36 // Function to open Excel File From The File Selection Dialog
37 function openExcel(filename) {
38     if(excelObj == void 0)
39         excelObj = new ActiveXObject('Excel.Application');
40     excelBook = excelObj.Workbooks.Open(filename);
41     excelObj.Visible = true;
42     excelObj.ScreenUpdating = true;
43 }
44
45 function testUpdateSAPFromExcel(){
46     OPEN_EXCEL_FILE;
47     if(excelObj == void 0) {
48         excelFileName = selectFileDialog('Select Excel File');
49         if(excelFileName.length) {
50             openExcel(excelFileName);
51             excelSheet = excelBook.ActiveSheet;
```

```

52     } else {
53         message('E: No Excel File Selected');
54         return; // If Problem opening selected excel file, stop the process
55     }
56 } else { // Excel is already open (Manually Opened or Re-run for Error Processing)
57     try {
58         excelSheet = excelBook.ActiveSheet;
59         // Check to see if we can read cell value, if not then Re Open Excel File
60         var cellCheckValue = excelSheet.Cells(1, 2).Value;
61     }
62     catch(err) {
63         delete excelObj;
64         goto OPEN_EXCEL_FILE;
65     }
66 }
67
68 onscreen 'SAPLMGMM.0060'
69     updateSAPFromExcel(excelSheet, 2, 1, 4); // Updates Industry sector, Material Type and Copy from Material
70     enter(); // Select Views pop-up is displayed
71 }
72
73 // Applicable to only edit field and check box
74 // For Table and Radio button different logic applies
75 function updateSAPFromExcel(excelActiveSheet, nCurrentRow, nStartColumn, nEndColumn) {
76     excelColumnSAPHeadingsRow = 1;
77     var scrElementName = '';
78     var scrElementValue = '';
79
80     for(var currentCol = nStartColumn; currentCol < nEndColumn; currentCol++) {
81         scrElementName = excelActiveSheet.Cells(excelColumnSAPHeadingsRow, currentCol).Value;
82         scrElementValue = excelActiveSheet.Cells(nCurrentRow, currentCol).Value;
83
84         println('\n----- scrElementName: '+scrElementName+');
85         println('\n----- scrElementValue: '+scrElementValue+'\n');
86
87         if(scrElementValue == undefined || typeof(scrElementValue) == 'undefined' || isBlank(scrElementValue)) {
88             scrElementValue = '';
89             continue; // Next Element within for loop
90         }
91
92         if(isControl('F['+scrElementName+']')){
93             // if(scrElementValue.trim() == 'NULL'){
94             if(scrElementValue.toString().trim().toUpperCase() == 'NULL'){
95                 set('F['+scrElementName+']', ''); //set the value to blank
96             } else {
97                 set('F['+scrElementName+']', '&V[scrElementValue]'); //set the value to user entered value in excel
98             }
99         } else if(isControl('C['+scrElementName+']')){
100             // if(scrElementValue.trim() == 'NULL'){
101             if(scrElementValue.toString().trim().toUpperCase() == 'NULL'){
102                 set('C['+scrElementName+']', ' '); //set the value to blank
103             } else {
104                 set('C['+scrElementName+']', 'X'); //set the value
105             }
106         }
107     }
108 }

```