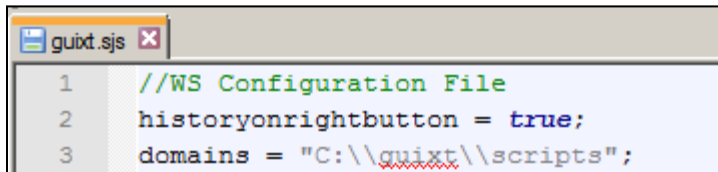


Liquid UI: Using Domains Localvaluehelp

Purpose

The localvaluehelp command enables users to access help for possible input sets for SAP inputfields when you perform a right-click on the field in question. This command will function both on GuiXT and native SAP fields. The localvalue help command can be used only on inputfields.

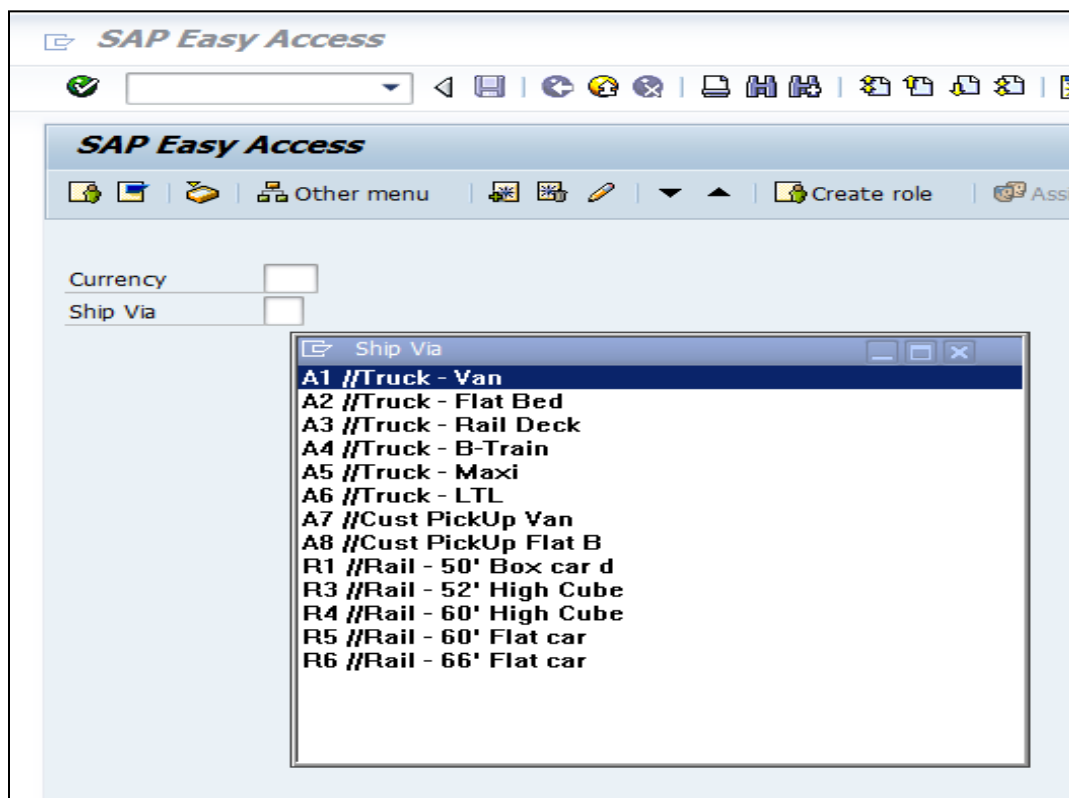
NOTE: To enable localvaluehelp, the following entries must be entered in the guixt.sjs configuration file:



```
1 //WS Configuration File
2 historyonrightbutton = true;
3 domains = "C:\\guixt\\scripts";
```

User Interface

Log into SAP and on the SAP Easy Access Screen you will see the Liquid UI fields. Right clicking on any of those fields will display the localvaluehelp using domains as shown below:



Liquid UI Code [Script]

User Interface file -

```
SAPLSMTR_NAVIGATION.E0100.sjs
1
2  del("X[IMAGE_CONTAINER]"); // Delete ActiveX Container on SAP Easy Access
3  inputfield([1,1], "Currency", [1,15], {"name":"z_va0x_currency", "size":3});
4  localvaluehelp("F[Currency]", {"domain":"CURRENCY"});
5
6  inputfield([2,1], "Ship Via", [2,15], {"name":"z_va0x_shipvia", "size":2});
7  localvaluehelp("F[Ship Via]", {"domain":"SHIPVIA"});
8
```

Domains files -

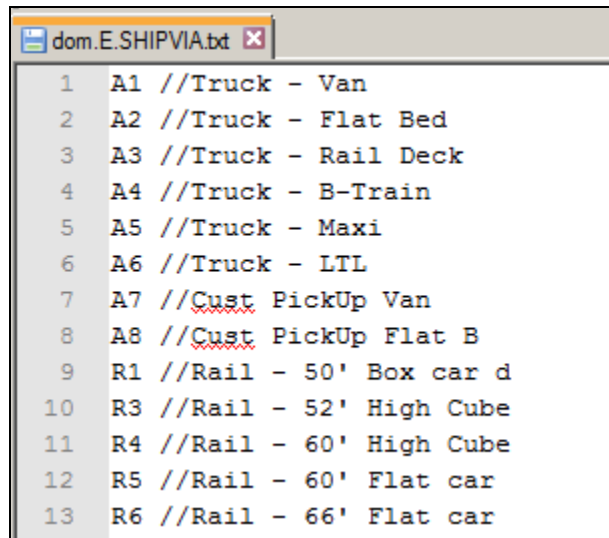
domText.E.txt

```
domText.E.txt
1  Ship Via: SHIPVIA
2  Currency: CURRENCY
3
```

dom.E.CURRENCY.txt

```
dom.E.CURRENCY.txt
1  ADP //Andoran peseta
2  AED //United Arab Emirates Dirham
3  AFA //Afghani
4  ALL //Albanian Lek
5  AMD //Armenian Dram
6  ANG //West Indian Guilder
7  AOK //Angolan Kwanza
8  BBD //Barbados Dollar
```

dom.E.SHIPVIA.txt



```
1  A1 //Truck - Van
2  A2 //Truck - Flat Bed
3  A3 //Truck - Rail Deck
4  A4 //Truck - B-Train
5  A5 //Truck - Maxi
6  A6 //Truck - LTL
7  A7 //Cust Pickup Van
8  A8 //Cust Pickup Flat B
9  R1 //Rail - 50' Box car d
10 R3 //Rail - 52' High Cube
11 R4 //Rail - 60' High Cube
12 R5 //Rail - 60' Flat car
13 R6 //Rail - 66' Flat car
```