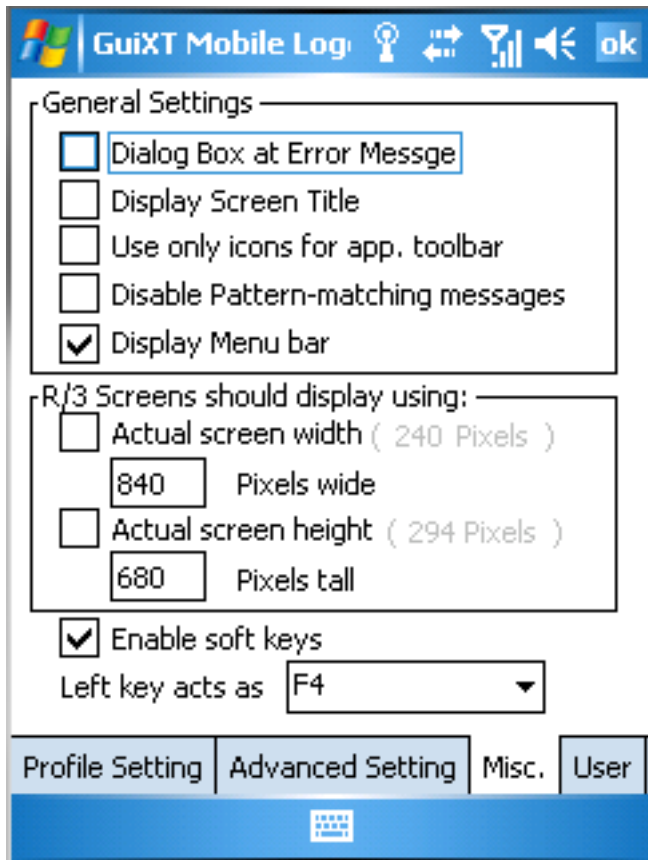


Scanguns Appendices

6.1.2.3 Scanguns Miscellaneous Profile Settings

In addition to the basic and advanced settings previously explained, the profile also has a tab containing some miscellaneous settings. These appear as shown below



These are found on the 'Advanced' tab in the Profile settings. There are three areas of the miscellaneous settings, which are as follows:

- General
- SAP Application Screen Display
- Soft Keys

General

The General settings under Miscellaneous are as follows:

Dialog Box at Error Message

Specifies the time in milliseconds between the first and second characters entered in a field. If the time is below the threshold, Mobile assumes that a scan is being performed.

Scanguns Appendices

Display Screen Title

When checked, will enable display of the screen title. When unchecked the screen titles will not be displayed.

Use only Icons for app Toolbar

When checked, the Mobile toolbar will only display icons for pushbuttons. When unchecked, the toolbar display the pushbutton labels as well as the icons.

Disable Pattern-Matching messages

Disables display of pattern-matching messages when checked; enables their display when unchecked.

Display Menu Bar

Enables display of the menu bar when checked and disables menu bar display when unchecked.

SAP Application Screen Display

The General Miscellaneous settings are as follows:

Actual Screen Width (pixels)

Check to manually set the screen width in pixels.

Note: You must also set the screen width in the 'Pixels Wide' field explained below.

Pixels wide

Enter the number of pixels that the screen width is to display.

Note: This option is only applied if you check the 'Actual Screen Width' checkbox described above.

Actual Screen Height (pixels)

Scanguns Appendices

Check to manually set the screen width in pixels.

Note: You must also set the screen width in the 'Pixels tall' field explained below.

Pixels tall

Enter the number of pixels that the screen height is to display.

Note: This option is only applied if you check the 'Actual Screen Height' checkbox described above.

Soft Keys

There are two settings related to the use of soft keys. These are as follows:

Enable Soft Keys

If checked, specifies that the Key name of the left key will act in a preset manner and will automatically act in that manner when user is in Mobile.

Left key acts as

Defines the function of the specified key when soft keys are activate. Click on this field to display a drop-down list containing the available keys for this soft key to act as.

Unique solution ID: #1502

Author: Shilpa Sahu

Last update: 2019-06-21 02:27