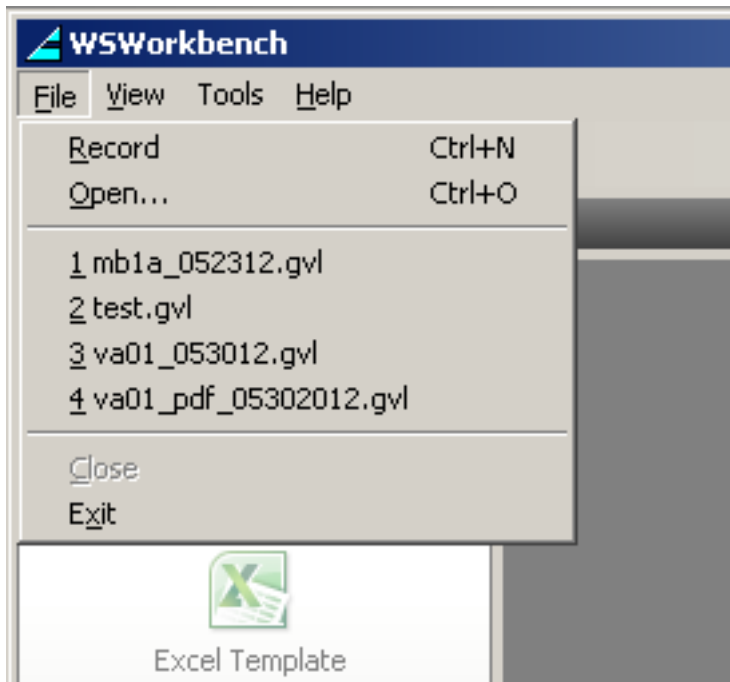


# Workbench User Interfaces

## 5.1.2.1 Workbench - File Menu

The File menu is visible and active regardless of whether any GVL file is selected. This menu appears as shown below.



The options contained in the File menu are as follows.

Note: The Save, Save As, Print and Print Preview options are only available when a file is open for editing in Workbench. The Print and Print Preview are currently disabled.

### Record

Begins a new recording in SAP. If a recording is in progress, you can press this button to stop the recording. It corresponds to the Record icon in the toolbar.

### Open

Opens a previously saved or recorded file for editing or running.

code sample

# Workbench User Interfaces

More explanatory text.

- list item
- list item

## Close

Closes the file you are currently working on.

code sample

More explanatory text.

- list item
- list item

## Save

Saves the current file you are working on.

code sample

More explanatory text.

- list item
- list item

## Save As

Enables you to specify a directory or file name other than the default for a recording you want to save.

code sample

More explanatory text.

- list item
- list item

## Exit

Closes Workbench and exits all operations.

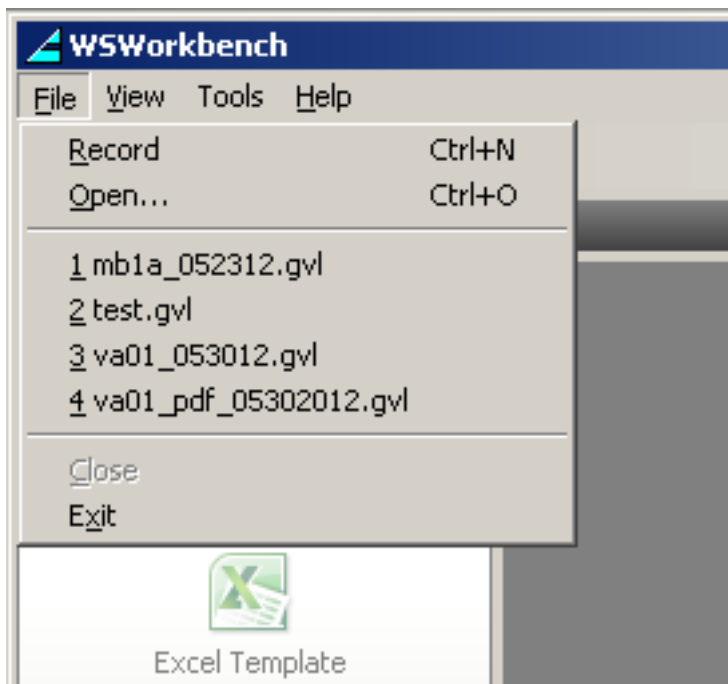
# Workbench User Interfaces

code sample

More explanatory text.

- list item
- list item

In addition to the options specified above, the File menu also contains a list of the most recent files that you opened. This list is located between the 'Save As..' and 'Exit' options in the File menu as shown below.



Unique solution ID: #1580  
Author: Shilpa Sahu  
Last update: 2019-08-01 11:32