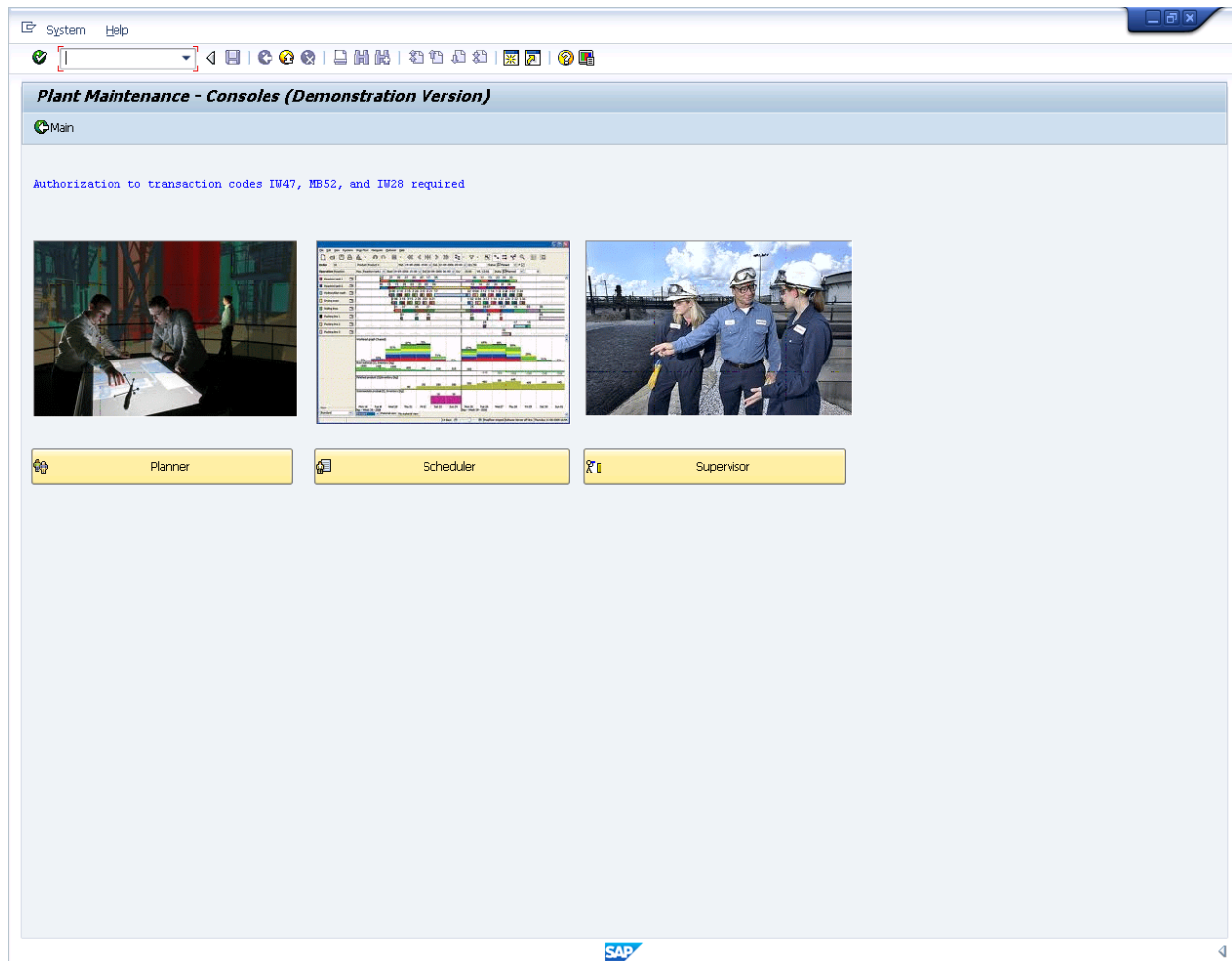


Using SAP Plant Maintenance Console

3.1.1 Getting Started with SAP PM Console

Getting started with PSC.

After logging into SAP and selecting the PM Console pushbutton on the main launchpad, you will see the main Console screen, as shown below:



On the main Console screen are three pushbuttons, as follows:

Planner

This pushbutton will take you to the Planner console screen. This console enables you to perform many basic tasks in SAP through streamlined transactions.

Scheduler

This pushbutton will launch the Scheduler console screen. Here you can execute many of the same tasks as the Planner, with the addition of additional transactions and functions such as ATP checking and permit reports.

Supervisor

Using SAP Plant Maintenance Console

This pushbutton will start the Supervisor console screen. Here you can perform all the functions of the Planner and Scheduler consoles, but with the addition of managerial tasks, such as releasing purchase requisitions.

- [Planner Console](#)
List of the available features and functionality in the Planner Console of PSC.
- [Scheduler Console](#)
List of the available features and functionality in the Scheduler Console of PSC.
- [Supervisor Console](#)
List of the available features and functionality in the Supervisor Console of PSC.

Unique solution ID: #1609

Author: Shilpa Sahu

Last update: 2019-08-02 08:16