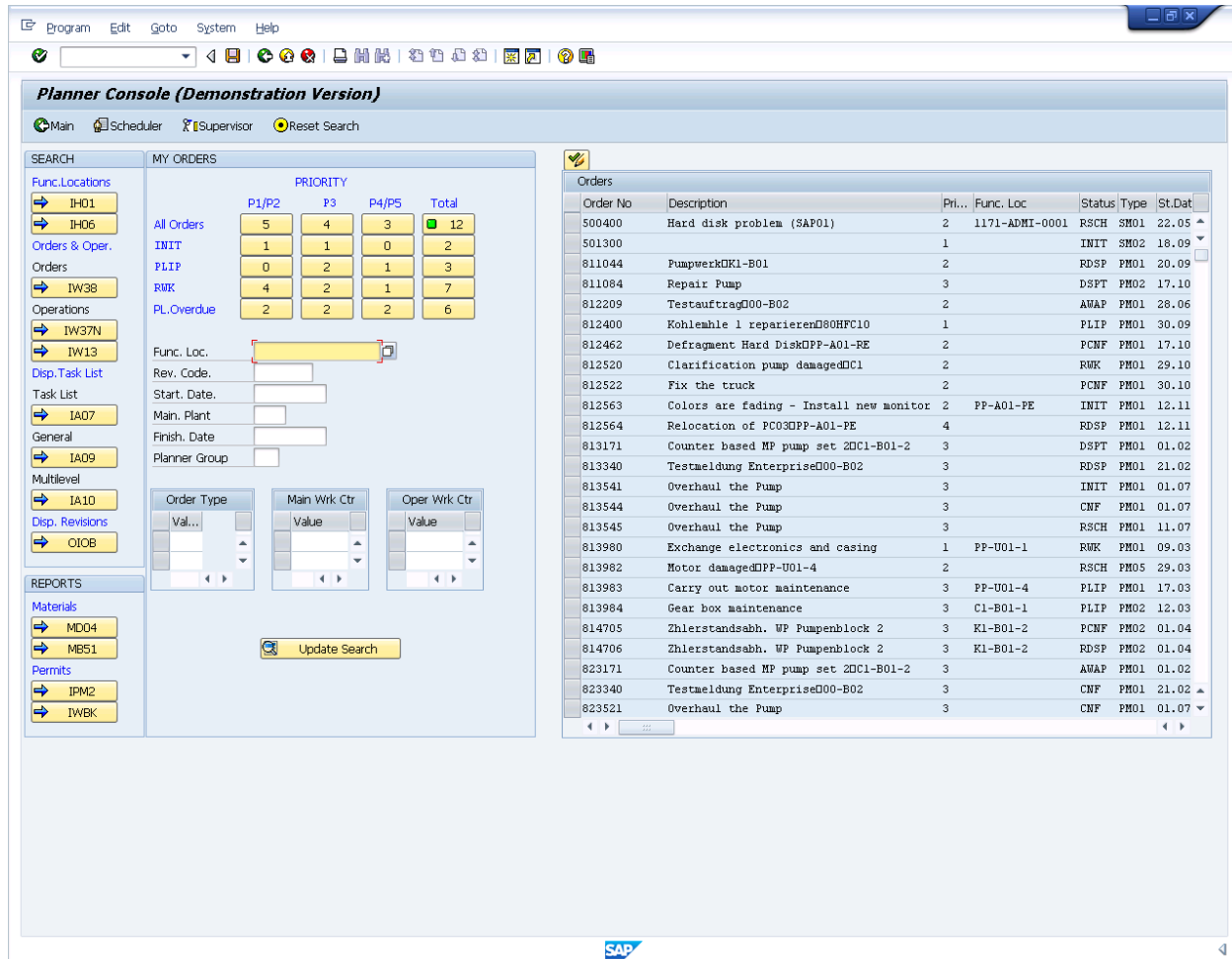


Using SAP Plant Maintenance Console

3.1.2 SAP Planner Console

List of the available features and functionality in the Planner Console of PSC.

The PSC Planner Console is divided into four main sections, as shown below:



The four sections are:

- Search
- Reports
- My Orders
- Order List

These sections are explained as follows.

Search

This section is located on the top left of the console and is designed to assist you in finding information about your orders. There are several linked transactions, each of

Using SAP Plant Maintenance Console

which is accessed from the linked pushbutton. Press the pushbuttons to launch the individual transactions. The included transactions are as follows:

IH01

Launches the 'Functional Location Structure: Selection' transaction in SAP.

IH06

Launches the 'Display Functional Location: Functional Location Selection' transaction in SAP.

IW38

Launches the 'Change PM Orders: Selection of Orders' transaction in SAP.

IW37N

Launches the 'Change Orders and Operations: Selection of Orders and Operations' transaction in SAP.

IW13

Launches the 'Material Where-Used List' transaction in SAP.

IA07

Launches the 'Display General Task List' transaction in SAP.

IA09

Launches the 'Display Task Lists: Task List Selection' transaction in SAP.

IA10

Launches the 'Multi-Level Task List: PM Task List Selection' transaction in SAP.

OIOB

Launches the 'Change View "Maintenance revisions": Overview' transaction in SAP.

Reports

This section is located on the right side, immediately below the Search section. It contains the following functions:

MD04

Launches the 'Stock/Requirements List' transaction in SAP.

MB51

Launches the 'Material Document List' in SAP.

IPM2

Launches the 'Change Permits: Selection of Permits' transaction in SAP.

IWBK

Launches the 'Material Availability Information' transaction in SAP.

My Orders

This section is located between the Search and Order List sections. It displays the current orders for the individual user based on the criteria entered in the search. The results are displayed in the top section as pushbuttons and the search criteria are below. The My Orders section contains the following functions:

Using SAP Plant Maintenance Console

Func Loc.

Enter the functional location of the desired order in this field.

Rev. Code

Enter the order's revision code here.

Start. Date

Enter the work order's start date here.

Main. Plant

Enter the number of the maintenance plant here.

Finish. Date

Enter the work order's finish date here.

Planner Group

Enter the planner group here.

Order Type

Enter the order numbers in this table.

Main Wk Ctr

Enter the maintenance work center numbers in this table.

Oper Wk Ctr

Enter the operational work center number here in this table.

Update Search

When you have entered all the relevant search criteria, click the Update Search pushbutton to update the search results.

Order List

This section does not have a title as the others do - it is simply a list of the current work orders returned based on choosing the respective pushbutton displaying the number of orders in the priority matrix. It is located on the right side of the console.

Unique solution ID: #1610

Author: Shilpa Sahu

Last update: 2019-08-02 08:17